

A17754

Leader in Biomolecular Solutions for Life Science



RHBDF1 Rabbit pAb

Catalog No.: A17754

Basic Information

Observed MW

97kDa

Calculated MW

97kDa

Category

Polyclonal Antibody

Applications

WB,IF/ICC,ELISA

Cross-Reactivity

Mouse,Rat

Background

Predicted to enable growth factor binding activity and serine-type endopeptidase activity. Involved in several processes, including negative regulation of protein secretion; regulation of epidermal growth factor receptor signaling pathway; and regulation of proteasomal protein catabolic process. Located in Golgi membrane and endoplasmic reticulum membrane.

Recommended Dilutions

WB 1:500 - 1:2000

IF/ICC 1:50 - 1:200

ELISA Recommended starting concentration is 1 µg/mL. Please optimize the concentration based on your specific assay requirements.

Immunogen Information

Gene ID

64285

Swiss Prot

Q96CC6

Immunogen

Recombinant protein (or fragment). This information is considered to be commercially sensitive.

Synonyms

Dist1; hDist1; C16orf8; EGFR-RS; gene-89; gene-90; RHBDF1

Contact

 www.abclonal.com

Product Information

Source

Rabbit

Isotype

IgG

Purification

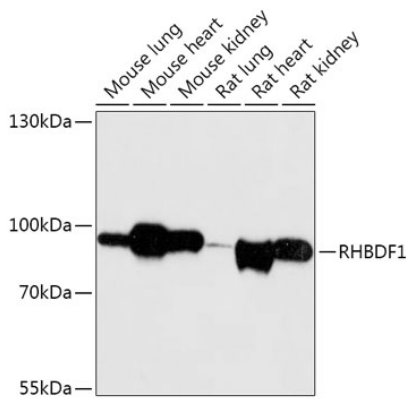
Affinity purification

Storage

Store at -20°C. Avoid freeze / thaw cycles.

Buffer: PBS with 0.01% thimerosal, 50% glycerol, pH7.3.

Validation Data



Western blot analysis of various lysates using RHBDF1 Rabbit pAb (A17754) at 1:1000 dilution.

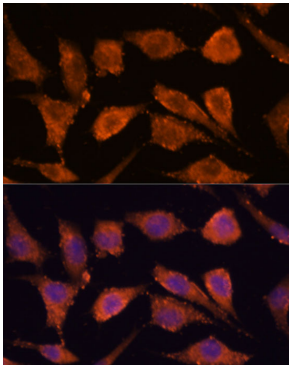
Secondary antibody: HRP-conjugated Goat anti-Rabbit IgG (H+L) (AS014) at 1:10000 dilution.

Lysates/proteins: 25µg per lane.

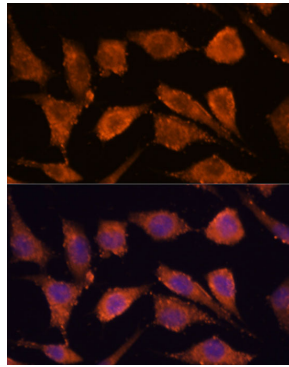
Blocking buffer: 3% nonfat dry milk in TBST.

Detection: ECL Basic Kit (RM00020).

Exposure time: 30s.



Immunofluorescence analysis of L929 cells using RHBDF1 Rabbit pAb (A17754) at dilution of 1:100. Secondary antibody: Cy3-conjugated Goat anti-Rabbit IgG (H+L) (AS007) at 1:500 dilution. Blue: DAPI for nuclear staining.



Immunofluorescence analysis of L929 cells using RHBDF1 Rabbit pAb (A17754) at dilution of 1:100 (40x lens). Secondary antibody: Cy3-conjugated Goat anti-Rabbit IgG (H+L) (AS007) at 1:500 dilution. Blue: DAPI for nuclear staining.