

A1775

Leader in Biomolecular Solutions for Life Science



BUB1B Rabbit pAb

Catalog No.: A1775 **1 Publications**

Basic Information

Observed MW

55kDa/120kDa

Calculated MW

120kDa

Category

Polyclonal Antibody

Applications

WB,IF/ICC,ELISA

Cross-Reactivity

Human,Mouse,Rat

Background

This gene encodes a kinase involved in spindle checkpoint function. The protein has been localized to the kinetochore and plays a role in the inhibition of the anaphase-promoting complex/cyclosome (APC/C), delaying the onset of anaphase and ensuring proper chromosome segregation. Impaired spindle checkpoint function has been found in many forms of cancer.

Recommended Dilutions

WB	1:500 - 1:2000
IF/ICC	1:50 - 1:200

Immunogen Information

Gene ID	Swiss Prot
701	O60566

Immunogen

Recombinant fusion protein containing a sequence corresponding to amino acids 1-260 of human BUB1B (NP_001202.4).

Synonyms

MVA1; SSK1; BUBR1; Bub1A; MAD3L; hBUBR1; BUB1beta; BUB1B

Contact

 www.abclonal.com

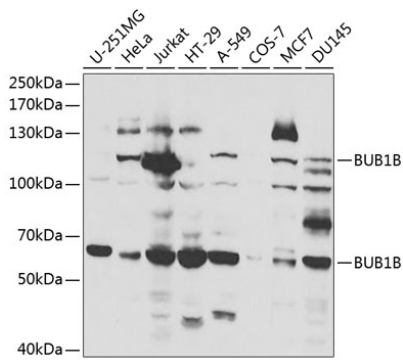
Product Information

Source	Isotype	Purification
Rabbit	IgG	Affinity purification

Storage

Store at -20°C. Avoid freeze / thaw cycles.
Buffer: PBS with 0.02% sodium azide,50% glycerol,pH7.3.

Validation Data

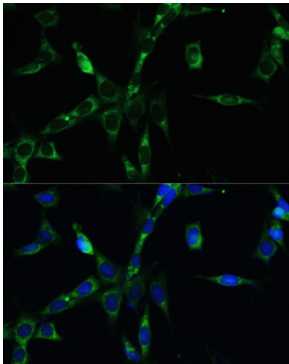


Western blot analysis of extracts of various cell lines, using BUB1B antibody (A1775) at 1:1000 dilution.

Secondary antibody: HRP Goat Anti-Rabbit IgG (H+L) (AS014) at 1:10000 dilution.

Lysates/proteins: 25µg per lane.

Blocking buffer: 3% nonfat dry milk in TBST.



Immunofluorescence analysis of NIH-3T3 cells using BUB1B antibody (A1775) at dilution of 1:100. Blue: DAPI for nuclear staining.