

A17731

Leader in Biomolecular Solutions for Life Science



CENPN Rabbit pAb

Catalog No.: A17731

Basic Information

Observed MW

38kDa

Calculated MW

40kDa

Category

Polyclonal Antibody

Applications

WB,ELISA

Cross-Reactivity

Human,Mouse

Background

The protein encoded by this gene forms part of the nucleosome-associated complex and is important for kinetochore assembly. It is bound to kinetochores during S phase and G2 and recruits other proteins to the centromere. Pseudogenes of this gene are located on chromosome 2. Alternative splicing results in multiple transcript variants that encode different protein isoforms.

Recommended Dilutions

WB 1:500 - 1:2000

ELISA Recommended starting concentration is 1 µg/mL. Please optimize the concentration based on your specific assay requirements.

Immunogen Information

Gene ID

55839

Swiss Prot

Q96H22

Immunogen

Recombinant protein (or fragment). This information is considered to be commercially sensitive.

Synonyms

BM039; CENP-N; ICEN32; C16orf60; CENPN

Contact

 www.abclonal.com

Product Information

Source

Rabbit

Isotype

IgG

Purification

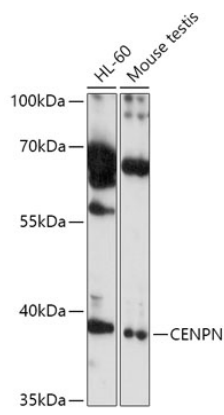
Affinity purification

Storage

Store at -20°C. Avoid freeze / thaw cycles.

Buffer: PBS with 0.01% thimerosal, 50% glycerol, pH7.3.

Validation Data



Western blot analysis of various lysates using CENPN Rabbit pAb (A17731) at 1:1000 dilution.

Secondary antibody: HRP-conjugated Goat anti-Rabbit IgG (H+L) (AS014) at 1:10000 dilution.

Lysates/proteins: 25µg per lane.

Blocking buffer: 3% nonfat dry milk in TBST.

Detection: ECL Basic Kit (RM00020).

Exposure time: 10s.