

A17727

Leader in Biomolecular Solutions for Life Science



NDC1 Rabbit pAb

Catalog No.: A17727 **2 Publications**

Basic Information

Observed MW

76kDa

Calculated MW

76kDa

Category

Polyclonal Antibody

Applications

WB,ELISA

Cross-Reactivity

Human,Mouse,Rat

Background

A structural constituent of nuclear pore. Involved in nuclear pore complex assembly and nuclear pore localization. Located in actin cytoskeleton; nuclear membrane; and plasma membrane. Part of nuclear pore.

Recommended Dilutions

WB 1:500 - 1:2000

ELISA Recommended starting concentration is 1 µg/mL. Please optimize the concentration based on your specific assay requirements.

Immunogen Information

Gene ID

55706

Swiss Prot

Q9BTX1

Immunogen

Recombinant protein (or fragment). This information is considered to be commercially sensitive.

Synonyms

NET3; TMEM48; NDC1

Contact

 www.abclonal.com

Product Information

Source

Rabbit

Isotype

IgG

Purification

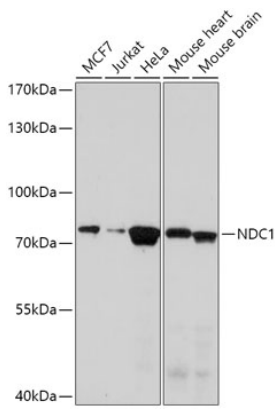
Affinity purification

Storage

Store at -20°C. Avoid freeze / thaw cycles.

Buffer: PBS with 0.09% Sodium azide, 50% glycerol, pH 7.3.

Validation Data



Western blot analysis of various lysates using NDC1 Rabbit pAb (A17727) at 1:1000 dilution.
Secondary antibody: HRP-conjugated Goat anti-Rabbit IgG (H+L) (AS014) at 1:10000 dilution.
Lysates/proteins: 25µg per lane.
Blocking buffer: 3% nonfat dry milk in TBST.
Detection: ECL Basic Kit (RM00020).
Exposure time: 5min.