

A17726

Leader in Biomolecular Solutions for Life Science



# INTS8 Rabbit pAb

Catalog No.: A17726

## Basic Information

---

### Observed MW

113kDa

### Calculated MW

113kDa

### Category

Polyclonal Antibody

### Applications

WB,ELISA

### Cross-Reactivity

Human,Mouse

## Background

---

This gene encodes a subunit of the Integrator complex which is involved in the cleavage of small nuclear RNAs U1 and U2 within the nucleus. The encoded protein associates with RNA polymerase II and is recruited to the U1 and U2 small nuclear RNA genes. Alternative splicing results in multiple transcript variants.

## Recommended Dilutions

---

**WB** 1:500 - 1:2000

**ELISA** Recommended starting concentration is 1 µg/mL. Please optimize the concentration based on your specific assay requirements.

## Immunogen Information

---

### Gene ID

55656

### Swiss Prot

Q75QN2

### Immunogen

Synthetic peptide. This information is considered to be commercially sensitive.

### Synonyms

INT8; NEDCHS; C8orf52; INTS8

## Contact

---

 [www.abclonal.com](http://www.abclonal.com)

## Product Information

---

### Source

Rabbit

### Isotype

IgG

### Purification

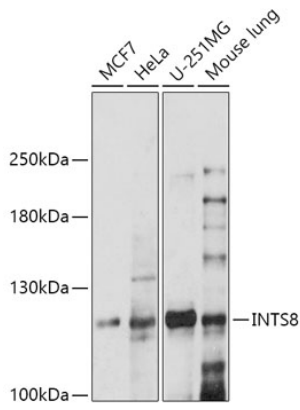
Affinity purification

### Storage

Store at -20°C. Avoid freeze / thaw cycles.

Buffer: PBS with 0.01% thimerosal, 50% glycerol, pH7.3.

## Validation Data



Western blot analysis of various lysates using INTS8 Rabbit pAb (A17726) at 1:1000 dilution.  
Secondary antibody: HRP-conjugated Goat anti-Rabbit IgG (H+L) (AS014) at 1:10000 dilution.  
Lysates/proteins: 25µg per lane.  
Blocking buffer: 3% nonfat dry milk in TBST.  
Detection: ECL Basic Kit (RM00020).  
Exposure time: 90s.