

A17716

Leader in Biomolecular Solutions for Life Science



ARHGEF10L Rabbit pAb

Catalog No.: A17716

Basic Information

Observed MW

140kDa

Calculated MW

140kDa

Category

Polyclonal Antibody

Applications

WB,ELISA

Cross-Reactivity

Human,Rat

Background

This gene belongs to the RhoGEF subfamily of RhoGTPases. Members of this subfamily are activated by specific guanine nucleotide exchange factors (GEFs) and are involved in signal transduction. The encoded protein shows cytosolic distribution. Alternative splicing results in multiple transcript variants.

Recommended Dilutions

WB 1:500 - 1:2000

ELISA Recommended starting concentration is 1 µg/mL. Please optimize the concentration based on your specific assay requirements.

Immunogen Information

Gene ID

55160

Swiss Prot

Q9HCE6

Immunogen

Recombinant protein (or fragment). This information is considered to be commercially sensitive.

Synonyms

GrinchGEF; ARHGEF10L

Contact

 www.abclonal.com

Product Information

Source

Rabbit

Isotype

IgG

Purification

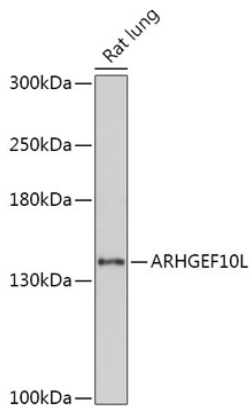
Affinity purification

Storage

Store at -20°C. Avoid freeze / thaw cycles.

Buffer: PBS with 0.01% thimerosal, 50% glycerol, pH7.3.

Validation Data



Western blot analysis of lysates from Rat lung, using ARHGEF10L Rabbit pAb (A17716) at 1:1000 dilution.

Secondary antibody: HRP-conjugated Goat anti-Rabbit IgG (H+L) (AS014) at 1:10000 dilution.

Lysates/proteins: 25µg per lane.

Blocking buffer: 3% nonfat dry milk in TBST.

Detection: ECL Basic Kit (RM00020).

Exposure time: 90s.