

A17692

Leader in Biomolecular Solutions for Life Science



LGALS13 Rabbit pAb

Catalog No.: A17692

Basic Information

Observed MW

16kDa

Calculated MW

16kDa

Category

Polyclonal Antibody

Applications

WB,ELISA

Cross-Reactivity

Human

Background

Lysophospholipases are enzymes that act on biological membranes to regulate the multifunctional lysophospholipids. The protein encoded by this gene has lysophospholipase activity. It is composed of two identical subunits which are held together by disulfide bonds. This protein has structural similarity to several members of the beta-galactoside-binding S-type lectin family.

Recommended Dilutions

WB 1:500 - 1:2000

ELISA Recommended starting concentration is 1 µg/mL. Please optimize the concentration based on your specific assay requirements.

Immunogen Information

Gene ID

29124

Swiss Prot

Q9UHV8

Immunogen

Recombinant protein (or fragment). This information is considered to be commercially sensitive.

Synonyms

PP13; GAL13; PLAC8; LGALS13

Contact

 www.abclonal.com

Product Information

Source

Rabbit

Isotype

IgG

Purification

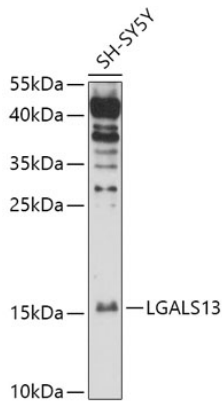
Affinity purification

Storage

Store at -20°C. Avoid freeze / thaw cycles.

Buffer: PBS with 0.01% thimerosal, 50% glycerol, pH7.3.

Validation Data



Western blot analysis of lysates from SH-SY5Y cells, using LGALS13 Rabbit pAb (A17692) at 1:1000 dilution.

Secondary antibody: HRP-conjugated Goat anti-Rabbit IgG (H+L) (AS014) at 1:10000 dilution.

Lysates/proteins: 25µg per lane.

Blocking buffer: 3% nonfat dry milk in TBST.

Detection: ECL Basic Kit (RM00020).

Exposure time: 180s.