

A17660

Leader in Biomolecular Solutions for Life Science



PLCL2 Rabbit pAb

Catalog No.: A17660

Basic Information

Observed MW

126kDa

Calculated MW

126kDa

Category

Polyclonal Antibody

Applications

WB, ELISA

Cross-Reactivity

Mouse

Background

Enables GABA receptor binding activity. Predicted to be involved in negative regulation of cold-induced thermogenesis and phosphatidylinositol-mediated signaling. Predicted to act upstream of or within several processes, including B cell activation; gamma-aminobutyric acid signaling pathway; and negative regulation of B cell receptor signaling pathway. Predicted to be located in cytoplasm.

Recommended Dilutions

WB 1:500 - 1:2000

ELISA Recommended starting concentration is 1 µg/mL. Please optimize the concentration based on your specific assay requirements.

Immunogen Information

Gene ID

23228

Swiss Prot

Q9UPR0

Immunogen

Recombinant protein (or fragment). This information is considered to be commercially sensitive.

Synonyms

PLCE2; PLCL2

Contact

 www.abclonal.com

Product Information

Source

Rabbit

Isotype

IgG

Purification

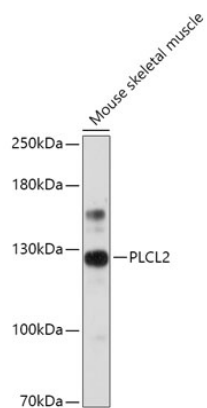
Affinity purification

Storage

Store at -20°C. Avoid freeze / thaw cycles.

Buffer: PBS with 0.01% thimerosal, 50% glycerol, pH 7.3.

Validation Data



Western blot analysis of lysates from Mouse skeletal muscle, using PLCL2 Rabbit pAb (A17660) at 1:1000 dilution.

Secondary antibody: HRP-conjugated Goat anti-Rabbit IgG (H+L) (AS014) at 1:10000 dilution.

Lysates/proteins: 25µg per lane.

Blocking buffer: 3% nonfat dry milk in TBST.

Detection: ECL Basic Kit (RM00020).

Exposure time: 30s.