

A17657

Leader in Biomolecular Solutions for Life Science



RTF1 Rabbit pAb

Catalog No.: A17657

Basic Information

Observed MW

100kDa

Calculated MW

80kDa

Category

Polyclonal Antibody

Applications

WB, ELISA

Cross-Reactivity

Human, Mouse

Background

This locus may represent a gene involved in regulation of transcription elongation and chromatin remodeling, based on studies of similar proteins in other organisms. The encoded protein may bind single-stranded DNA.

Recommended Dilutions

WB 1:500 - 1:2000

Immunogen Information

Gene ID

23168

Swiss Prot

Q92541

Immunogen

A synthetic peptide corresponding to a sequence within amino acids 300-400 of human RTF1 (NP_055953.3).

Synonyms

GTL7; KIAA0252; RTF1

Contact



www.abclonal.com

Product Information

Source

Rabbit

Isotype

IgG

Purification

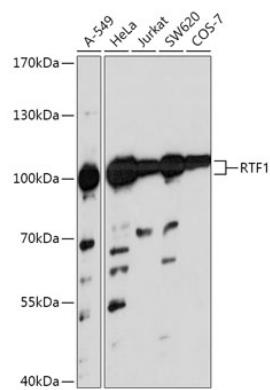
Affinity purification

Storage

Store at -20°C. Avoid freeze / thaw cycles.

Buffer: PBS with 0.01% thimerosal, 50% glycerol, pH 7.3.

Validation Data



Western blot analysis of various lysates using RTF1 Rabbit pAb (A17657) at 1:1000 dilution.
Secondary antibody: HRP Goat Anti-Rabbit IgG (H+L) (AS014) at 1:10000 dilution.
Lysates/proteins: 25µg per lane.
Blocking buffer: 3% nonfat dry milk in TBST.
Detection: ECL Basic Kit (RM00020).
Exposure time: 30s.