

A17648

Leader in Biomolecular Solutions for Life Science



CEP131 Rabbit pAb

Catalog No.: A17648

Basic Information

Observed MW

145kDa

Calculated MW

122kDa

Category

Polyclonal Antibody

Applications

WB,ELISA

Cross-Reactivity

Human,Mouse

Background

Enables protein homodimerization activity. Involved in several processes, including intraciliary transport involved in cilium assembly; protein localization to centrosome; and regulation of centrosome duplication. Located in several cellular components, including ciliary transition zone; intercellular bridge; and microtubule organizing center. Colocalizes with centrosome.

Recommended Dilutions

WB 1:500 - 1:2000

ELISA Recommended starting concentration is 1 µg/mL. Please optimize the concentration based on your specific assay requirements.

Immunogen Information

Gene ID

22994

Swiss Prot

Q9UPN4

Immunogen

Synthetic peptide. This information is considered to be commercially sensitive.

Synonyms

AZ1; ZA1; AZI1; CEP131

Contact

 www.abclonal.com

Product Information

Source

Rabbit

Isotype

IgG

Purification

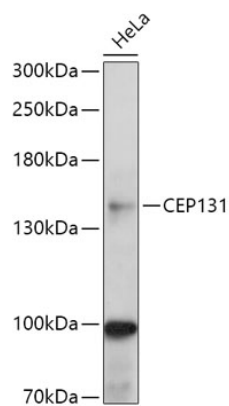
Affinity purification

Storage

Store at -20°C. Avoid freeze / thaw cycles.

Buffer: PBS with 0.01% thimerosal, 50% glycerol, pH7.3.

Validation Data



Western blot analysis of lysates from HeLa cells, using CEP131 Rabbit pAb (A17648) at 1:1000 dilution.

Secondary antibody: HRP-conjugated Goat anti-Rabbit IgG (H+L) (AS014) at 1:10000 dilution.

Lysates/proteins: 25µg per lane.

Blocking buffer: 3% nonfat dry milk in TBST.

Detection: ECL Basic Kit (RM00020).

Exposure time: 60s.