

A17647

Leader in Biomolecular Solutions for Life Science



# PCNX1 Rabbit pAb

Catalog No.: A17647

## Basic Information

### Observed MW

290kDa

### Calculated MW

259kDa

### Category

Polyclonal Antibody

### Applications

WB,ELISA

### Cross-Reactivity

Human

## Background

This gene encodes an evolutionarily conserved transmembrane protein similar to the pecanex protein in Drosophila. The fly protein is a component of the Notch signaling pathway, which functions in several developmental processes.

## Recommended Dilutions

WB 1:500 - 1:2000

## Immunogen Information

### Gene ID

22990

### Swiss Prot

Q96RV3

### Immunogen

A synthetic peptide corresponding to a sequence within amino acids 2250-2341 of human PCNX1 (NP\_055797.2).

### Synonyms

PCNX; PCNXL1; pecanex; PCNX1

## Contact



[www.abclonal.com](http://www.abclonal.com)

## Product Information

### Source

Rabbit

### Isotype

IgG

### Purification

Affinity purification

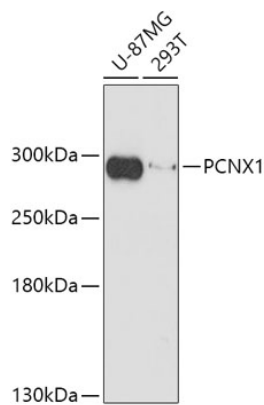
### Storage

Store at -20°C. Avoid freeze / thaw cycles.

Buffer: PBS with 0.01% thimerosal, 50% glycerol, pH7.3.

## Validation Data

---



Western blot analysis of various lysates using PCNX1 Rabbit pAb (A17647) at 1:1000 dilution.

Secondary antibody: HRP Goat Anti-Rabbit IgG (H+L) (AS014) at 1:10000 dilution.

Lysates/proteins: 25µg per lane.

Blocking buffer: 3% nonfat dry milk in TBST.

Detection: ECL Basic Kit (RM00020).

Exposure time: 3min.