

A17639

Leader in Biomolecular Solutions for Life Science



## MLXIP Rabbit pAb

Catalog No.: A17639

### Basic Information

**Observed MW**

91kDa

**Calculated MW**

101kDa

**Category**

Polyclonal Antibody

**Applications**

WB, ELISA

**Cross-Reactivity**

Human, Rat

### Background

This gene encodes a protein that functions as part of a heterodimer to activate transcription. The encoded protein forms a heterodimer with Max-like protein X (MLX) and is involved in the regulation of genes in response to cellular glucose levels.

### Recommended Dilutions

**WB** 1:500 - 1:2000

### Immunogen Information

**Gene ID**

22877

**Swiss Prot**

Q9HAP2

**Immunogen**

A synthetic peptide corresponding to a sequence within amino acids 50-150 of human MLXIP (NP\_055753.3).

**Synonyms**

MIR; MONDOA; bHLHe36; MLXIP

### Contact



[www.abclonal.com](http://www.abclonal.com)

### Product Information

**Source**

Rabbit

**Isotype**

IgG

**Purification**

Affinity purification

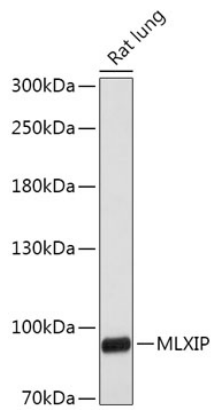
**Storage**

Store at -20°C. Avoid freeze / thaw cycles.

Buffer: PBS with 0.01% thimerosal, 50% glycerol, pH7.3.

## Validation Data

---



Western blot analysis of lysates from Rat lung, using MLXIP Rabbit pAb (A17639) at 1:1000 dilution.  
Secondary antibody: HRP Goat Anti-Rabbit IgG (H+L) (A5014) at 1:10000 dilution.  
Lysates/proteins: 25µg per lane.  
Blocking buffer: 3% nonfat dry milk in TBST.  
Detection: ECL Basic Kit (RM00020).  
Exposure time: 1s.