

A17580

Leader in Biomolecular Solutions for Life Science



# LDB1 Rabbit pAb

Catalog No.: A17580

## Basic Information

### Observed MW

46kDa

### Calculated MW

47kDa

### Category

Polyclonal Antibody

### Applications

WB,IHC-P,ELISA

### Cross-Reactivity

Human,Mouse,Rat

## Background

Enables LIM domain binding activity; RNA polymerase II-specific DNA-binding transcription factor binding activity; and enzyme binding activity. Involved in negative regulation of transcription, DNA-templated and positive regulation of transcription by RNA polymerase II. Located in chromatin. Part of beta-catenin-TCF complex.

## Recommended Dilutions

**WB** 1:500 - 1:2000

**IHC-P** 1:50 - 1:100

**ELISA** Recommended starting concentration is 1 µg/mL. Please optimize the concentration based on your specific assay requirements.

## Immunogen Information

### Gene ID

8861

### Swiss Prot

Q86U70

### Immunogen

Recombinant fusion protein containing a sequence corresponding to amino acids 1-50 of human LDB1 (NP\_003884.1).

### Synonyms

NLI; CLIM2; LDB-1; CLIM-2; LDB1

## Contact



[www.abclonal.com](http://www.abclonal.com)

## Product Information

### Source

Rabbit

### Isotype

IgG

### Purification

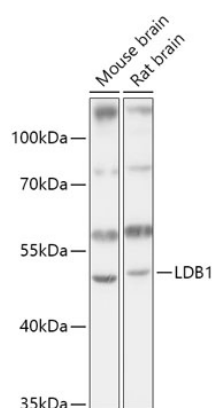
Affinity purification

### Storage

Store at -20°C. Avoid freeze / thaw cycles.

Buffer: PBS with 0.01% thimerosal, 50% glycerol, pH7.3.

## Validation Data



Western blot analysis of various lysates using LDB1 Rabbit pAb (A17580) at 1:1000 dilution.

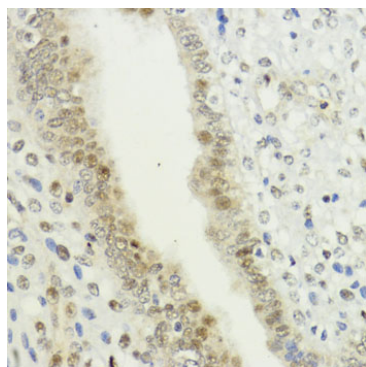
Secondary antibody: HRP-conjugated Goat anti-Rabbit IgG (H+L) (AS014) at 1:10000 dilution.

Lysates/proteins: 25µg per lane.

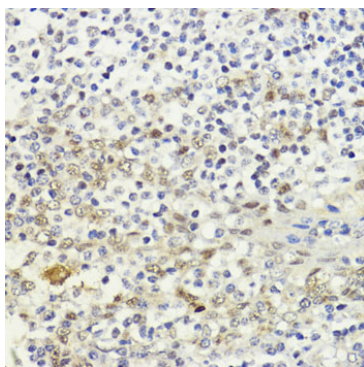
Blocking buffer: 3% nonfat dry milk in TBST.

Detection: ECL Basic Kit (RM00020).

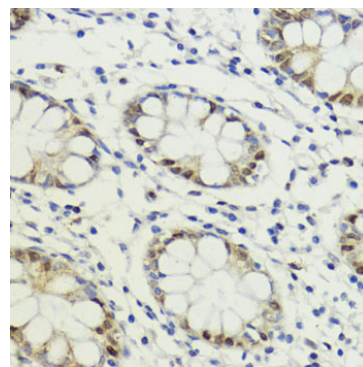
Exposure time: 10s.



Immunohistochemistry analysis of paraffin-embedded Human uterine cancer using LDB1 Rabbit pAb (A17580) at dilution of 1:200 (40x lens). Microwave antigen retrieval performed with 0.01M PBS Buffer (pH 7.2) prior to IHC staining.



Immunohistochemistry analysis of paraffin-embedded Human tonsil using LDB1 Rabbit pAb (A17580) at dilution of 1:200 (40x lens). Microwave antigen retrieval performed with 0.01M PBS Buffer (pH 7.2) prior to IHC staining.



Immunohistochemistry analysis of paraffin-embedded Human colon using LDB1 Rabbit pAb (A17580) at dilution of 1:200 (40x lens). Microwave antigen retrieval performed with 0.01M PBS Buffer (pH 7.2) prior to IHC staining.