

A1757

Leader in Biomolecular Solutions for Life Science



UBE3A Rabbit pAb

Catalog No.: A1757

Basic Information

Observed MW

100kDa

Calculated MW

101kDa

Category

Polyclonal Antibody

Applications

WB,IHC-P,IF/ICC,ELISA

Cross-Reactivity

Human,Mouse,Rat

Background

This gene encodes an E3 ubiquitin-protein ligase, part of the ubiquitin protein degradation system. This imprinted gene is maternally expressed in brain and biallelically expressed in other tissues. Maternally inherited deletion of this gene causes Angelman Syndrome, characterized by severe motor and intellectual retardation, ataxia, hypotonia, epilepsy, absence of speech, and characteristic facies. The protein also interacts with the E6 protein of human papillomavirus types 16 and 18, resulting in ubiquitination and proteolysis of tumor protein p53. Alternative splicing of this gene results in three transcript variants encoding three isoforms with different N-termini. Additional transcript variants have been described, but their full length nature has not been determined.

Recommended Dilutions

WB 1:100 - 1:500

IHC-P 1:50 - 1:200

IF/ICC 1:50 - 1:200

Immunogen Information

Gene ID

7337

Swiss Prot

Q05086

Immunogen

Recombinant fusion protein containing a sequence corresponding to amino acids 300-590 of human UBE3A (NP_570853.1).

Synonyms

AS; ANCR; PIX1; E6-AP; HPV6A; EPVE6AP; UBE3A

Contact

 www.abclonal.com

Product Information

Source

Rabbit

Isotype

IgG

Purification

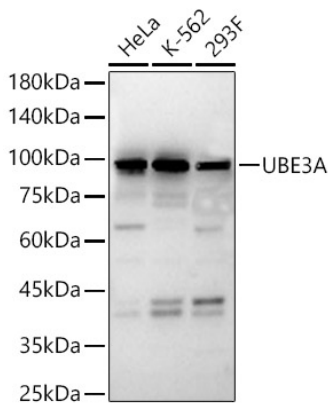
Affinity purification

Storage

Store at -20°C. Avoid freeze / thaw cycles.

Buffer: PBS with 0.02% sodium azide,50% glycerol,pH7.3.

Validation Data



Western blot analysis of various lysates, using UBE3A Rabbit pAb (A1757) at 1:500 dilution.

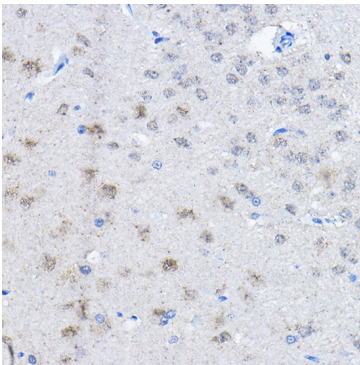
Secondary antibody: HRP Goat Anti-Rabbit IgG (H+L) (AS014) at 1:10000 dilution.

Lysates/proteins: 25µg per lane.

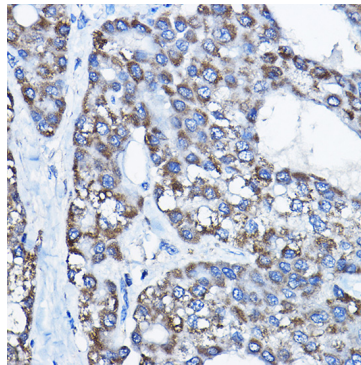
Blocking buffer: 3% nonfat dry milk in TBST.

Detection: ECL Basic Kit (RM00020).

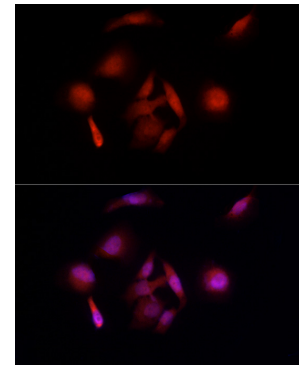
Exposure time: 60s.



Immunohistochemistry analysis of paraffin-embedded rat brain using UBE3A Rabbit pAb (A1757) at dilution of 1:100 (40x lens). Perform high pressure antigen retrieval with 10 mM citrate buffer pH 6.0 before commencing with IHC staining protocol.



Immunohistochemistry analysis of paraffin-embedded human liver cancer using UBE3A Rabbit pAb (A1757) at dilution of 1:100 (40x lens). Perform high pressure antigen retrieval with 10 mM citrate buffer pH 6.0 before commencing with IHC staining protocol.



Immunofluorescence analysis of HeLa cells using UBE3A Rabbit pAb (A1757) at dilution of 1:50 (40x lens). Secondary antibody: Cy3 Goat Anti-Rabbit IgG (H+L) (AS007) at 1:500 dilution. Blue: DAPI for nuclear staining.