

A17556

Leader in Biomolecular Solutions for Life Science



IPA1 Rabbit pAb

Catalog No.: A17556

Basic Information

Observed MW

52kDa

Calculated MW

42kDa

Category

Polyclonal Antibody

Applications

WB,ELISA

Cross-Reactivity

Oryza sativa

Background

Trans-acting factor that binds specifically to the consensus nucleotide sequence 5'-TNCGTACAA-3' (By similarity). May be involved in panicle development.

Recommended Dilutions

WB 1:500 - 1:2000

ELISA Recommended starting concentration is 1 µg/mL. Please optimize the concentration based on your specific assay requirements.

Immunogen Information

Gene ID

4345998

Swiss Prot

Q7EXZ2

Immunogen

Recombinant protein (or fragment). This information is considered to be commercially sensitive.

Synonyms

WFP; IPA1; SPL14; OsSPL14

Contact

 www.abclonal.com

Product Information

Source

Rabbit

Isotype

IgG

Purification

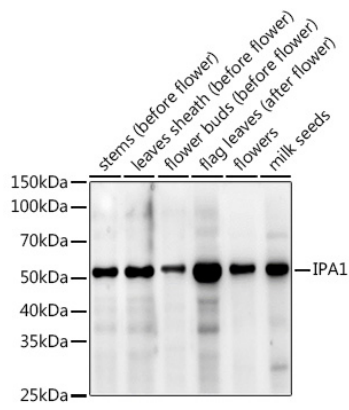
Affinity purification

Storage

Store at -20°C. Avoid freeze / thaw cycles.

Buffer: PBS containing 50% glycerol, preserved with proclin300 or sodium azide (as specified on the Certificate of Analysis), pH 7.3.

Validation Data



Western blot analysis of extracts of various tissues from the japonica rice (*Oryza sativa* L.) variety Zhonghua 11, using IPA1 Rabbit pAb (A17556) at 1:1000 dilution.

Secondary antibody: HRP-conjugated Goat anti-Rabbit IgG (H+L) (AS014) at 1:10000 dilution.

Lysates/proteins: 25µg per lane.

Blocking buffer: 3% nonfat dry milk in TBST.

Detection: ECL Enhanced Kit (RM00021).

Exposure time: 600s.