

A17547

Leader in Biomolecular Solutions for Life Science



ZIC1 Rabbit pAb

Catalog No.: A17547

Basic Information

Observed MW

48kDa

Calculated MW

48kDa

Category

Polyclonal Antibody

Applications

WB, ELISA

Cross-Reactivity

Human, Mouse, Rat

Background

This gene encodes a member of the ZIC family of C2H2-type zinc finger proteins. Members of this family are important during development. Aberrant expression of this gene is seen in medulloblastoma, a childhood brain tumor. This gene is closely linked to the gene encoding zinc finger protein of the cerebellum 4, a related family member on chromosome 3. This gene encodes a transcription factor that can bind and transactivate the apolipoprotein E gene.

Recommended Dilutions

WB 1:500 - 1:2000

Immunogen Information

Gene ID

7545

Swiss Prot

Q15915

Immunogen

Recombinant fusion protein containing a sequence corresponding to amino acids 120-210 of human ZIC1 (NP_003403.2).

Synonyms

ZIC; CRS6; BAIDCS; ZNF201; ZIC1

Contact



www.abclonal.com

Product Information

Source

Rabbit

Isotype

IgG

Purification

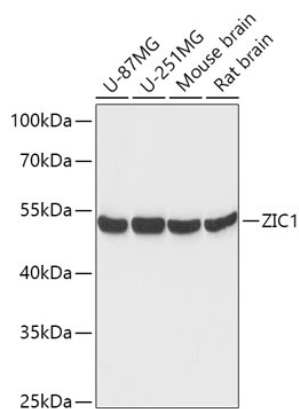
Affinity purification

Storage

Store at -20°C. Avoid freeze / thaw cycles.

Buffer: PBS with 0.01% thimerosal, 50% glycerol, pH 7.3.

Validation Data



Western blot analysis of various lysates using ZIC1 Rabbit pAb (A17547) at 1:1000 dilution.
Secondary antibody: HRP Goat Anti-Rabbit IgG (H+L) (AS014) at 1:10000 dilution.
Lysates/proteins: 25µg per lane.
Blocking buffer: 3% nonfat dry milk in TBST.
Detection: ECL Basic Kit (RM00020).
Exposure time: 30s.