

A17534

Leader in Biomolecular Solutions for Life Science



# SNTB1 Rabbit pAb

Catalog No.: A17534

## Basic Information

---

### Observed MW

58kDa

### Calculated MW

58kDa

### Category

Polyclonal Antibody

### Applications

WB,ELISA

### Cross-Reactivity

Mouse

## Background

---

Dystrophin is a large, rod-like cytoskeletal protein found at the inner surface of muscle fibers. Dystrophin is missing in Duchenne Muscular Dystrophy patients and is present in reduced amounts in Becker Muscular Dystrophy patients. The protein encoded by this gene is a peripheral membrane protein found associated with dystrophin and dystrophin-related proteins. This gene is a member of the syntrophin gene family, which contains at least two other structurally-related genes.

## Recommended Dilutions

---

**WB** 1:500 - 1:2000

**ELISA** Recommended starting concentration is 1 µg/mL. Please optimize the concentration based on your specific assay requirements.

## Immunogen Information

---

### Gene ID

6641

### Swiss Prot

Q13884

### Immunogen

Recombinant protein (or fragment). This information is considered to be commercially sensitive.

### Synonyms

A1B; SNT2; BSYN2; 59-DAP; DAPA1B; SNT2B1; TIP-43; SNTB1

## Contact

---

 [www.abclonal.com](http://www.abclonal.com)

## Product Information

---

### Source

Rabbit

### Isotype

IgG

### Purification

Affinity purification

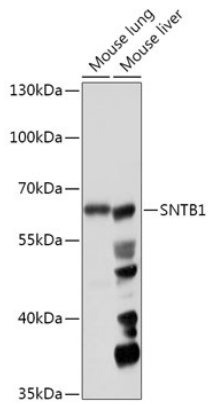
### Storage

Store at -20°C. Avoid freeze / thaw cycles.

Buffer: PBS with 0.01% thimerosal, 50% glycerol, pH7.3.

## Validation Data

---



Western blot analysis of various lysates using SNTB1 Rabbit pAb (A17534) at 1:1000 dilution.  
Secondary antibody: HRP-conjugated Goat anti-Rabbit IgG (H+L) (AS014) at 1:10000 dilution.  
Lysates/proteins: 25µg per lane.  
Blocking buffer: 3% nonfat dry milk in TBST.  
Detection: ECL Basic Kit (RM00020).  
Exposure time: 30s.