

A17483

Leader in Biomolecular Solutions for Life Science



## FCGR1B Rabbit pAb

Catalog No.: A17483

### Basic Information

#### Observed MW

27kDa

#### Calculated MW

32kDa

#### Category

Polyclonal Antibody

#### Applications

WB,IHC-P,ELISA

#### Cross-Reactivity

Human

### Background

Three distinct, but closely related classes of receptors that bind the Fc portion of IgG have been identified (FcγRI, II and III). The FcγRI family consists of three closely related genes termed A, B, and C. This gene likely encodes a non-functional protein that is not detectable at the cell surface and binds ligand with low affinity.

### Recommended Dilutions

**WB** 1:500 - 1:2000

**IHC-P** 1:50 - 1:200

**ELISA** Recommended starting concentration is 1 µg/mL. Please optimize the concentration based on your specific assay requirements.

### Immunogen Information

#### Gene ID

2210

#### Swiss Prot

Q92637

#### Immunogen

Synthetic peptide. This information is considered to be commercially sensitive.

#### Synonyms

CD34; FCG1; FcRI; CD64b; FCGR1; IGFR1; IGFRB; FCGR1B; FcγRIa

### Contact

 [www.abclonal.com](http://www.abclonal.com)

### Product Information

#### Source

Rabbit

#### Isotype

IgG

#### Purification

Affinity purification

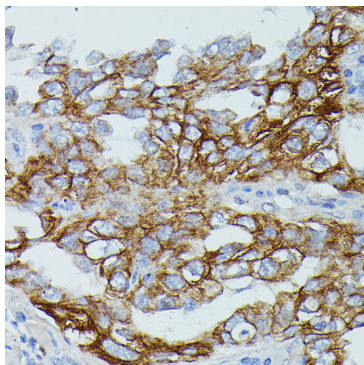
#### Storage

Store at -20°C. Avoid freeze / thaw cycles.

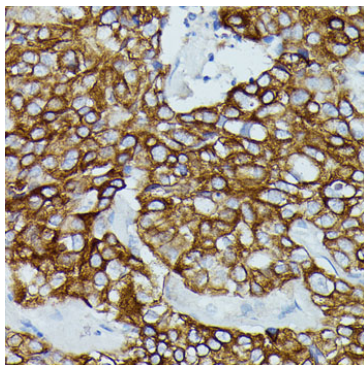
Buffer: PBS with 0.01% thimerosal, 50% glycerol, pH7.3.

## Validation Data

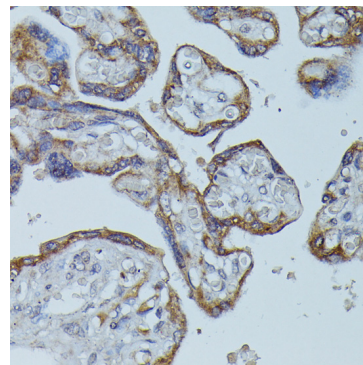
---



Immunohistochemistry analysis of paraffin-embedded Human lung cancer using FCGR1B Rabbit pAb (A17483) at dilution of 1:100 (40x lens). Microwave antigen retrieval performed with 0.01M PBS Buffer (pH 7.2) prior to IHC staining.



Immunohistochemistry analysis of paraffin-embedded Human mammary cancer using FCGR1B Rabbit pAb (A17483) at dilution of 1:100 (40x lens). Microwave antigen retrieval performed with 0.01M PBS Buffer (pH 7.2) prior to IHC staining.



Immunohistochemistry analysis of paraffin-embedded Human placenta using FCGR1B Rabbit pAb (A17483) at dilution of 1:100 (40x lens). Microwave antigen retrieval performed with 0.01M PBS Buffer (pH 7.2) prior to IHC staining.