

A17365

Leader in Biomolecular Solutions for Life Science



CAPRIN2 Rabbit pAb

Catalog No.: A17365

Basic Information

Observed MW

126kDa

Calculated MW

126kDa

Category

Polyclonal Antibody

Applications

WB,ELISA

Cross-Reactivity

Human,Rat

Background

The protein encoded by this gene may regulate the transport of mRNA. It may play a role in the differentiation of erythroblasts. Multiple transcript variants encoding different isoforms have been found for this gene.

Recommended Dilutions

WB 1:500 - 1:2000

Immunogen Information

Gene ID

65981

Swiss Prot

Q6IMN6

Immunogen

Recombinant fusion protein containing a sequence corresponding to amino acids 88-329 of CAPRIN2 (NP_001002259.1).

Synonyms

EEG1; EEG-1; CIQDC1; RNG140; CAPRIN2

Contact



www.abclonal.com

Product Information

Source

Rabbit

Isotype

IgG

Purification

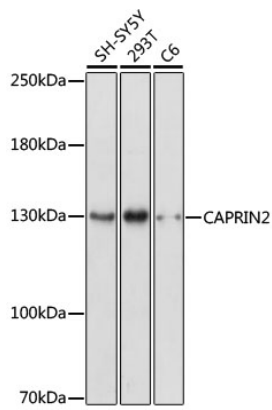
Affinity purification

Storage

Store at -20°C. Avoid freeze / thaw cycles.

Buffer: PBS with 0.01% thimerosal,50% glycerol,pH7.3.

Validation Data



Western blot analysis of various lysates using CAPRIN2 Rabbit pAb (A17365) at 1:1000 dilution.
Secondary antibody: HRP Goat Anti-Rabbit IgG (H+L) (AS014) at 1:10000 dilution.
Lysates/proteins: 25µg per lane.
Blocking buffer: 3% nonfat dry milk in TBST.
Detection: ECL Enhanced Kit (RM00021).
Exposure time: 3min.