

A17302

Leader in Biomolecular Solutions for Life Science



# AKAP8 Rabbit pAb

Catalog No.: A17302

## Basic Information

### Observed MW

100kDa

### Calculated MW

76kDa

### Category

Polyclonal Antibody

### Applications

WB,IHC-P,ELISA

### Cross-Reactivity

Human,Rat

## Background

This gene encodes a member of the A-kinase anchor protein family. A-kinase anchor proteins are scaffold proteins that contain a binding domain for the RI/RII subunit of protein kinase A (PKA) and recruit PKA and other signaling molecules to specific subcellular locations. This gene encodes a nuclear A-kinase anchor protein that binds to the RII alpha subunit of PKA and may play a role in chromosome condensation during mitosis by targeting PKA and the condensin complex to chromatin. A pseudogene of this gene is located on the short arm of chromosome 9.

## Recommended Dilutions

WB	1:500 - 1:2000
IHC-P	1:100 - 1:200

## Immunogen Information

<b>Gene ID</b>	<b>Swiss Prot</b>
10270	O43823

### Immunogen

A synthetic peptide corresponding to a sequence within amino acids 592-692 of human AKAP8 (NP\_005849.1)

### Synonyms

AKAP-8; AKAP95; AKAP 95; AKAP-95; AKAP8

## Contact

 [www.abclonal.com](http://www.abclonal.com)

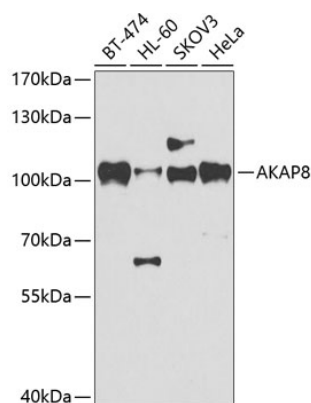
## Product Information

<b>Source</b>	<b>Isotype</b>	<b>Purification</b>
Rabbit	IgG	Affinity purification

### Storage

Store at -20°C. Avoid freeze / thaw cycles.  
Buffer: PBS with 0.02% sodium azide,50% glycerol,pH7.3.

## Validation Data



Western blot analysis of various lysates using AKAP8 Rabbit pAb (A17302) at 1:500 dilution.

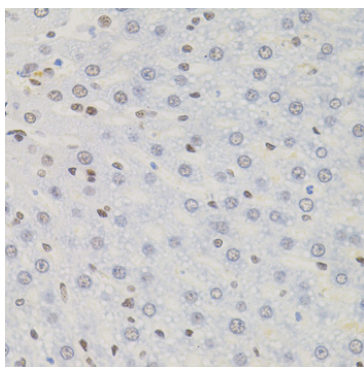
Secondary antibody: HRP Goat Anti-Rabbit IgG (H+L) (AS014) at 1:10000 dilution.

Lysates/proteins: 25µg per lane.

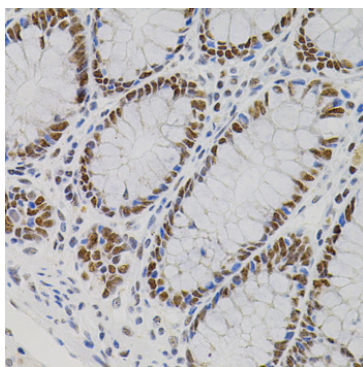
Blocking buffer: 3% nonfat dry milk in TBST.

Detection: ECL Basic Kit (RM00020).

Exposure time: 90s.



Immunohistochemistry analysis of paraffin-embedded rat liver using AKAP8 Rabbit pAb (A17302) (40x lens). Perform microwave antigen retrieval with 10 mM PBS buffer pH 7.2 before commencing with IHC staining protocol.



Immunohistochemistry analysis of paraffin-embedded human colon using AKAP8 Rabbit pAb (A17302) (40x lens). Perform microwave antigen retrieval with 10 mM PBS buffer pH 7.2 before commencing with IHC staining protocol.