

A1723

Leader in Biomolecular Solutions for Life Science



YKL-40/CHI3L1 Rabbit pAb

Catalog No.: A1723

Basic Information

Observed MW

30-45kDa

Calculated MW

43kDa

Category

Polyclonal Antibody

Applications

WB,IHC-P,IF/ICC,ELISA

Cross-Reactivity

Human,Mouse,Rat

Background

Chitinases catalyze the hydrolysis of chitin, which is an abundant glycopolymer found in insect exoskeletons and fungal cell walls. The glycoside hydrolase 18 family of chitinases includes eight human family members. This gene encodes a glycoprotein member of the glycosyl hydrolase 18 family. The protein lacks chitinase activity and is secreted by activated macrophages, chondrocytes, neutrophils and synovial cells. The protein is thought to play a role in the process of inflammation and tissue remodeling.

Recommended Dilutions

WB 1:500 - 1:1000

IHC-P 1:50 - 1:200

IF/ICC 1:50 - 1:200

ELISA Recommended starting concentration is 1 µg/mL. Please optimize the concentration based on your specific assay requirements.

Immunogen Information

Gene ID

1116

Swiss Prot

P36222

Immunogen

Recombinant protein (or fragment). This information is considered to be commercially sensitive.

Synonyms

GP39; ASRT7; GP-39; YK-40; YKL40; CGP-39; YKL-40; YYL-40; HC-gp39; HCgp-3P; hCGP-39; YKL-40/CHI3L1

Product Information

Source

Rabbit

Isotype

IgG

Purification

Affinity purification

Storage

Store at -20°C. Avoid freeze / thaw cycles.

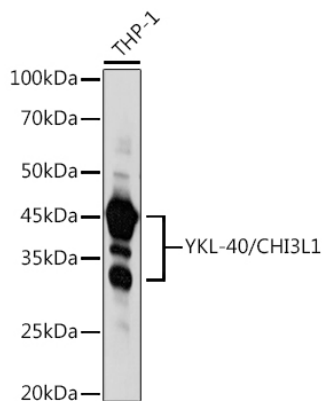
Buffer: PBS with 0.01% thimerosal, 50% glycerol, pH7.3.

Contact

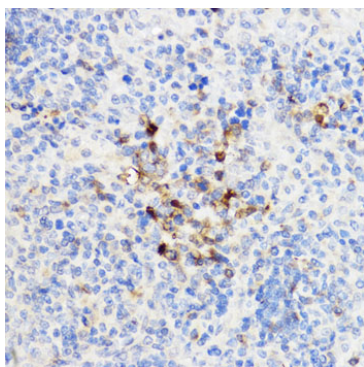


www.abclonal.com

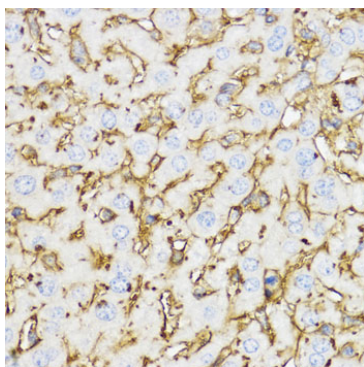
Validation Data



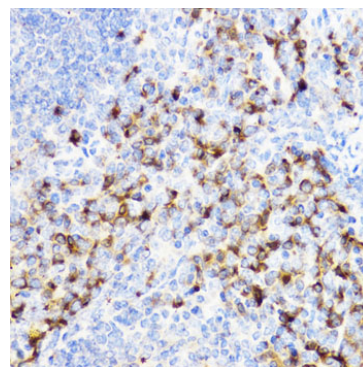
Western blot analysis of lysates from THP-1 cells, using YKL-40/CHI3L1 Rabbit pAb (A1723) at 1:1000 dilution.
 Secondary antibody: HRP-conjugated Goat anti-Rabbit IgG (H+L) (AS014) at 1:10000 dilution.
 Lysates/proteins: 25µg per lane.
 Blocking buffer: 3% nonfat dry milk in TBST.
 Detection: ECL Basic Kit (RM00020).
 Exposure time: 30s.



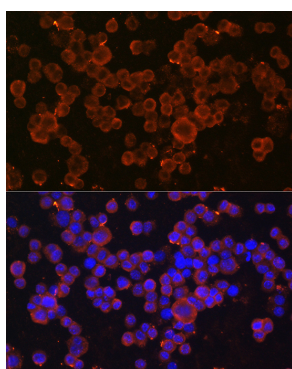
Immunohistochemistry analysis of paraffin-embedded Rat spleen using YKL-40/CHI3L1 Rabbit pAb (A1723) at dilution of 1:100 (40x lens). Microwave antigen retrieval performed with 0.01M PBS Buffer (pH 7.2) prior to IHC staining.



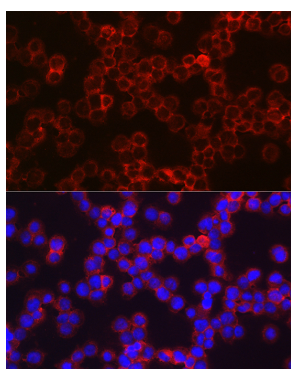
Immunohistochemistry analysis of paraffin-embedded Mouse liver using YKL-40/CHI3L1 Rabbit pAb (A1723) at dilution of 1:100 (40x lens). Microwave antigen retrieval performed with 0.01M PBS Buffer (pH 7.2) prior to IHC staining.



Immunohistochemistry analysis of paraffin-embedded Mouse spleen using YKL-40/CHI3L1 Rabbit pAb (A1723) at dilution of 1:100 (40x lens). Microwave antigen retrieval performed with 0.01M PBS Buffer (pH 7.2) prior to IHC staining.



Immunofluorescence analysis of RAW264.7 cells using YKL-40/CHI3L1 Rabbit pAb (A1723) at dilution of 1:100 (40x lens). Secondary antibody: Cy3-conjugated Goat anti-Rabbit IgG (H+L) (AS007) at 1:500 dilution. Blue: DAPI for nuclear staining.



Immunofluorescence analysis of THP-1 cells using YKL-40/CHI3L1 Rabbit pAb (A1723) at dilution of 1:100 (40x lens). Secondary antibody: Cy3-conjugated Goat anti-Rabbit IgG (H+L) (AS007) at 1:500 dilution. Blue: DAPI for nuclear staining.