

A17212

Leader in Biomolecular Solutions for Life Science



# FAT4 Rabbit pAb

Catalog No.: A17212

## Basic Information

### Observed MW

460kDa

### Calculated MW

543kDa

### Category

Polyclonal Antibody

### Applications

WB,IF/ICC,ELISA

### Cross-Reactivity

Human,Mouse,Rat

## Background

The protein encoded by this gene is a member of the protocadherin family. This gene may play a role in regulating planar cell polarity (PCP). Studies in mice suggest that loss of PCP signaling may cause cystic kidney disease, and mutations in this gene have been associated with Van Maldergem Syndrome 2. Alternatively spliced transcript variants have been noted for this gene.

## Recommended Dilutions

**WB** 1:500 - 1:2000

**IF/ICC** 1:50 - 1:200

**ELISA** Recommended starting concentration is 1 µg/mL. Please optimize the concentration based on your specific assay requirements.

## Immunogen Information

### Gene ID

79633

### Swiss Prot

Q6V0I7

### Immunogen

A synthetic peptide corresponding to a sequence within amino acids 4900-4981 of human FAT4 (NP\_078858.4).

### Synonyms

FATJ; FAT-J; CDHF14; CDHR11; HKLLS2; VMLDS2; NBLA00548; FAT4

## Contact



[www.abclonal.com](http://www.abclonal.com)

## Product Information

### Source

Rabbit

### Isotype

IgG

### Purification

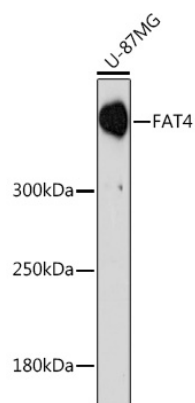
Affinity purification

### Storage

Store at -20°C. Avoid freeze / thaw cycles.

Buffer: PBS with 0.09% Sodium azide,50% glycerol,pH7.3.

## Validation Data



Western blot analysis of lysates from U-87MG cells, using FAT4 Rabbit pAb (A17212) at 1:1000 dilution.

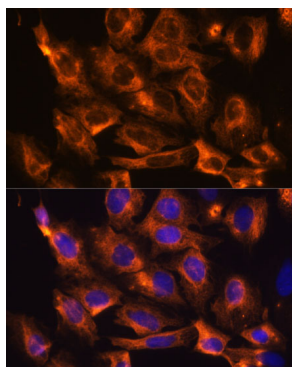
Secondary antibody: HRP-conjugated Goat anti-Rabbit IgG (H+L) (AS014) at 1:10000 dilution.

Lysates/proteins: 25µg per lane.

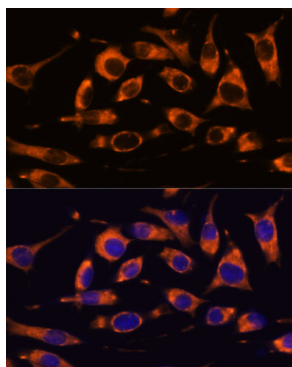
Blocking buffer: 3% nonfat dry milk in TBST.

Detection: ECL Basic Kit (RM00020).

Exposure time: 90s.



Immunofluorescence analysis of C6 cells using FAT4 Rabbit pAb (A17212) at dilution of 1:100. Secondary antibody: Cy3-conjugated Goat anti-Rabbit IgG (H+L) (AS007) at 1:500 dilution. Blue: DAPI for nuclear staining.



Immunofluorescence analysis of L929 cells using FAT4 Rabbit pAb (A17212) at dilution of 1:100. Secondary antibody: Cy3-conjugated Goat anti-Rabbit IgG (H+L) (AS007) at 1:500 dilution. Blue: DAPI for nuclear staining.