

A17209

Leader in Biomolecular Solutions for Life Science



## Bcl9 Rabbit pAb

Catalog No.: A17209

### Basic Information

#### Observed MW

Refer to figures

#### Calculated MW

149kDa

#### Category

Polyclonal Antibody

#### Applications

WB,IHC-P,IF/ICC,ELISA

#### Cross-Reactivity

Human,Mouse,Rat

### Background

Enables beta-catenin binding activity. Acts upstream of or within several processes, including myotube differentiation involved in skeletal muscle regeneration; skeletal muscle cell differentiation; and somatic stem cell population maintenance. Located in cis-Golgi network and nucleus. Is expressed in several structures, including brain; eye; head surface ectoderm; metanephros; and thymus primordium. Orthologous to human BCL9 (BCL9 transcription coactivator).

### Recommended Dilutions

WB	1:500 - 1:2000
IHC-P	1:50 - 1:200
IF/ICC	1:50 - 1:200
ELISA	Recommended starting concentration is 1 µg/mL. Please optimize the concentration based on your specific assay requirements.

### Contact



[www.abclonal.com](http://www.abclonal.com)

### Immunogen Information

#### Gene ID

77578

#### Swiss Prot

Q9D219

#### Immunogen

Recombinant protein (or fragment). This information is considered to be commercially sensitive.

#### Synonyms

Gm130; 2610202E01Rik; 8030475K17Rik; A330041G23Rik; Bcl9

### Product Information

#### Source

Rabbit

#### Isotype

IgG

#### Purification

Affinity purification

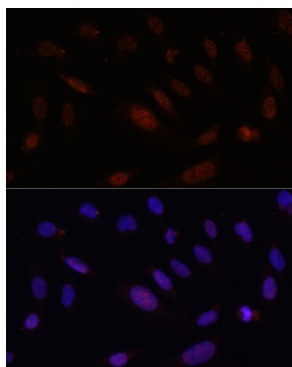
#### Storage

Store at -20°C. Avoid freeze / thaw cycles.

Buffer: PBS with 0.02% sodium azide, 50% glycerol, pH7.3.

## Validation Data

---



Immunofluorescence analysis of U2OS cells using Bcl9 Rabbit pAb (A17209) at dilution of 100 (40x lens). Secondary antibody: Cy3-conjugated Goat anti-Rabbit IgG (H+L) (AS007) at 1:500 dilution. Blue: DAPI for nuclear staining.