

A17188

Leader in Biomolecular Solutions for Life Science



VGLUT1 Rabbit pAb

Catalog No.: A17188

Basic Information

Observed MW

55kDa

Calculated MW

62kDa

Category

Polyclonal Antibody

Applications

WB,ELISA,IF-P

Cross-Reactivity

Human,Mouse,Rat

Background

The protein encoded by this gene is a vesicle-bound, sodium-dependent phosphate transporter that is specifically expressed in the neuron-rich regions of the brain. It is preferentially associated with the membranes of synaptic vesicles and functions in glutamate transport. The protein shares 82% identity with the differentiation-associated Na-dependent inorganic phosphate cotransporter and they appear to form a distinct class within the Na⁺/Pi cotransporter family.

Recommended Dilutions

WB 1:500 - 1:1000

IF-P 1:50 - 1:200

ELISA Recommended starting concentration is 1 µg/mL. Please optimize the concentration based on your specific assay requirements.

Immunogen Information

Gene ID

57030

Swiss Prot

Q9P2U7

Immunogen

Synthetic peptide. This information is considered to be commercially sensitive.

Synonyms

BNPI; VGLUT1; SLC17A7

Contact

 www.abclonal.com

Product Information

Source

Rabbit

Isotype

IgG

Purification

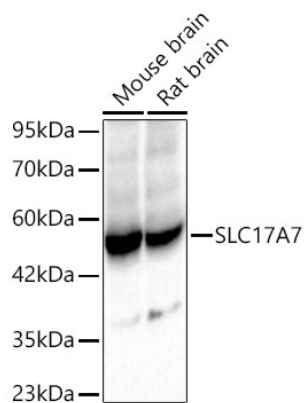
Affinity purification

Storage

Store at -20°C. Avoid freeze / thaw cycles.

Buffer: PBS containing 50% glycerol, preserved with proclin300 or sodium azide (as specified on the Certificate of Analysis), pH 7.3.

Validation Data



Western blot analysis of various lysates using SLC17A7 Rabbit pAb (A17188) at 1:1000 dilution incubated at room temperature for 1.5 hours.

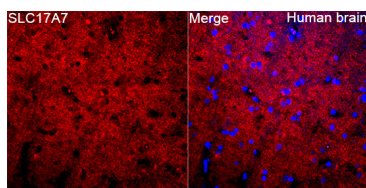
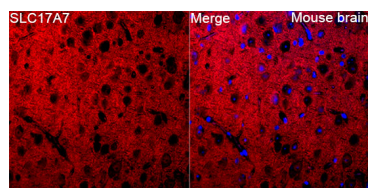
Secondary antibody: HRP-conjugated Goat anti-Rabbit IgG (H+L) (AS014) at 1:10000 dilution.

Lysates/proteins: 25 µg per lane.

Blocking buffer: 3% nonfat dry milk in TBST.

Detection: ECL Basic Kit (RM00020)

Exposure time: 45 s.



Immunofluorescence analysis of Mouse brain tissue using SLC17A7 Rabbit pAb (A17188) at a dilution of 1:100 (40x lens). Secondary antibody: Cy3-conjugated Goat anti-Rabbit IgG (H+L)(AS007) at 1:500 dilution. Blue: DAPI for nuclear staining. Microwave antigen retrieval performed with 0.01M Citrate Buffer (pH 6.0) prior to IF staining.

Immunofluorescence analysis of Human brain tissue using SLC17A7 Rabbit pAb (A17188) at a dilution of 1:100 (40x lens). Secondary antibody: Cy3-conjugated Goat anti-Rabbit IgG (H+L)(AS007) at 1:500 dilution. Blue: DAPI for nuclear staining. Microwave antigen retrieval performed with 0.01M Citrate Buffer (pH 6.0) prior to IF staining.