

A17161

Leader in Biomolecular Solutions for Life Science



RAPGEF6 Rabbit pAb

Catalog No.: A17161

Basic Information

Observed MW

179kDa

Calculated MW

179kDa

Category

Polyclonal Antibody

Applications

WB,ELISA

Cross-Reactivity

Mouse,Rat

Background

Enables several functions, including GTP-dependent protein binding activity; guanyl-nucleotide exchange factor activity; and phosphatidic acid binding activity. Involved in microvillus assembly; positive regulation of GTPase activity; and protein localization to plasma membrane. Located in several cellular components, including apical plasma membrane; centrosome; and endocytic vesicle.

Recommended Dilutions

WB 1:500 - 1:2000

ELISA Recommended starting concentration is 1 µg/mL. Please optimize the concentration based on your specific assay requirements.

Immunogen Information

Gene ID

51735

Swiss Prot

Q8TEU7

Immunogen

Recombinant protein (or fragment). This information is considered to be commercially sensitive.

Synonyms

RAGEF2; PDZGEF2; KIA001LB; PDZ-GEF2; RA-GEF-2; RAPGEF6

Contact

 www.abclonal.com

Product Information

Source

Rabbit

Isotype

IgG

Purification

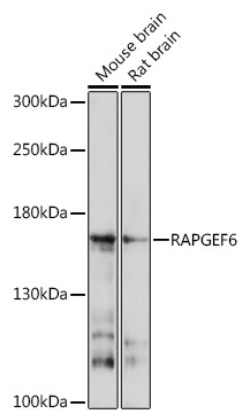
Affinity purification

Storage

Store at -20°C. Avoid freeze / thaw cycles.

Buffer: PBS with 0.01% thimerosal, 50% glycerol, pH7.3.

Validation Data



Western blot analysis of various lysates using RAPGEF6 Rabbit pAb (A17161) at 1:1000 dilution.

Secondary antibody: HRP-conjugated Goat anti-Rabbit IgG (H+L) (AS014) at 1:10000 dilution.

Lysates/proteins: 25µg per lane.

Blocking buffer: 3% nonfat dry milk in TBST.

Detection: ECL Basic Kit (RM00020).

Exposure time: 30s.