

A17140

Leader in Biomolecular Solutions for Life Science



CIDEB Rabbit pAb

Catalog No.: A17140

Basic Information

Observed MW

28kDa

Calculated MW

25kDa

Category

Polyclonal Antibody

Applications

WB,ELISA

Cross-Reactivity

Human

Background

Enables identical protein binding activity. Involved in activation of cysteine-type endopeptidase activity; positive regulation of cell death; and positive regulation of release of cytochrome c from mitochondria. Acts upstream of or within apoptotic process. Located in cytosol and perinuclear region of cytoplasm.

Recommended Dilutions

WB 1:1000 - 1:5000

ELISA Recommended starting concentration is 1 µg/mL. Please optimize the concentration based on your specific assay requirements.

Immunogen Information

Gene ID

27141

Swiss Prot

Q9UHD4

Immunogen

Recombinant protein (or fragment). This information is considered to be commercially sensitive.

Synonyms

CIDEB; cell death activator CIDE-B; IN; LHR; MC56; MDU2; MDU3; MIC4; Pgp1; CDW44; CSPG8; HCELL; HUTCH-I; ECMR-III

Contact

 www.abclonal.com

Product Information

Source

Rabbit

Isotype

IgG

Purification

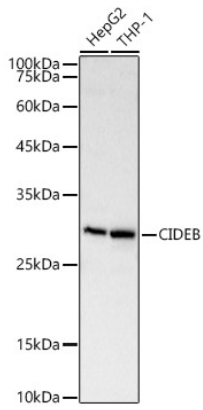
Affinity purification

Storage

Store at -20°C. Avoid freeze / thaw cycles.

Buffer: Buffer: PBS containing 50% glycerol, preserved with proclin300 or sodium azide (as specified on the Certificate of Analysis), pH 7.3.

Validation Data



Western blot analysis of various lysates, using CIDEB Rabbit pAb (A17140) at 1:2000 dilution.
Secondary antibody: HRP-conjugated Goat anti-Rabbit IgG (H+L) (AS014) at 1:10000 dilution.
Lysates/proteins: 25µg per lane.
Blocking buffer: 3% nonfat dry milk in TBST.
Detection: ECL Basic Kit (RM00020).
Exposure time: 10s.