

A17130

Leader in Biomolecular Solutions for Life Science



CNNM4 Rabbit pAb

Catalog No.: A17130

Basic Information

Observed MW

100kDa

Calculated MW

87kDa

Category

Polyclonal Antibody

Applications

WB,ELISA

Cross-Reactivity

Human,Mouse,Rat

Background

This gene encodes a member of the ancient conserved domain containing protein family. Members of this protein family contain a cyclin box motif and have structural similarity to the cyclins. The encoded protein may play a role in metal ion transport. Mutations in this gene are associated with Jalili syndrome which consists of cone-rod dystrophy and amelogenesis imperfecta.

Recommended Dilutions

WB 1:100 - 1:500

ELISA Recommended starting concentration is 1 µg/mL. Please optimize the concentration based on your specific assay requirements.

Immunogen Information

Gene ID

26504

Swiss Prot

Q6P4Q7

Immunogen

A synthetic peptide corresponding to a sequence within amino acids 700-775 of human CNNM4 (NP_064569.3).

Synonyms

ACDP4; CNNM4

Contact



www.abclonal.com

Product Information

Source

Rabbit

Isotype

IgG

Purification

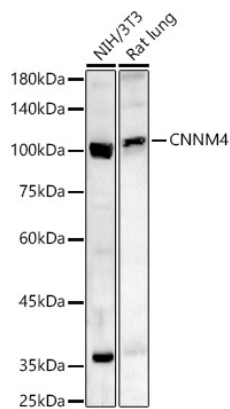
Affinity purification

Storage

Store at -20°C. Avoid freeze / thaw cycles.

Buffer: PBS with 0.05% proclin300,50% glycerol,pH7.3.

Validation Data



Western blot analysis of various lysates, using CNNM4 Rabbit pAb (A17130) at 1:500 dilution.

Secondary antibody: HRP-conjugated Goat anti-Rabbit IgG (H+L) (AS014) at 1:10000 dilution.

Lysates/proteins: 25µg per lane.

Blocking buffer: 3% nonfat dry milk in TBST.

Detection: ECL Basic Kit (RM00020).

Exposure time: 180s.