

A17127

Leader in Biomolecular Solutions for Life Science



# GAPVD1 Rabbit pAb

Catalog No.: A17127

## Basic Information

### Observed MW

165kDa

### Calculated MW

165kDa

### Category

Polyclonal Antibody

### Applications

WB,IF/ICC,ELISA

### Cross-Reactivity

Mouse

## Background

Enables GTPase activating protein binding activity and guanyl-nucleotide exchange factor activity. Involved in regulation of protein transport. Located in cytosol and plasma membrane.

## Recommended Dilutions

<b>WB</b>	1:500 - 1:2000
<b>IF/ICC</b>	1:50 - 1:100

## Immunogen Information

<b>Gene ID</b>	<b>Swiss Prot</b>
26130	Q14C86

### Immunogen

Recombinant fusion protein containing a sequence corresponding to amino acids 1-260 of human GAPVD1 (NP\_056450.2).

### Synonyms

RAP6; GAPEX5; GAPex-5; GAPVD1

## Contact

 [www.abclonal.com](http://www.abclonal.com)

## Product Information

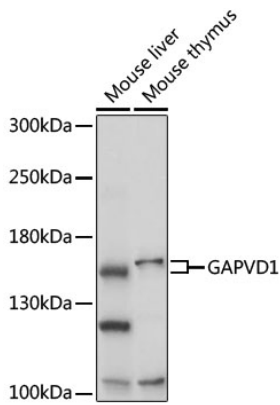
<b>Source</b>	<b>Isotype</b>	<b>Purification</b>
Rabbit	IgG	Affinity purification

### Storage

Store at -20°C. Avoid freeze / thaw cycles.  
Buffer: PBS with 0.01% thimerosal, 50% glycerol, pH7.3.

## Validation Data

---



Western blot analysis of various lysates using GAPVD1 Rabbit pAb (A17127) at 1:1000 dilution.

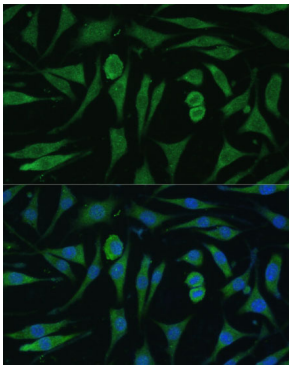
Secondary antibody: HRP Goat Anti-Rabbit IgG (H+L) (AS014) at 1:10000 dilution.

Lysates/proteins: 25µg per lane.

Blocking buffer: 3% nonfat dry milk in TBST.

Detection: ECL Basic Kit (RM00020).

Exposure time: 10s.



Immunofluorescence analysis of L929 cells using GAPVD1 Rabbit pAb (A17127) at dilution of 1:100. Secondary antibody: Cy3 Goat Anti-Rabbit IgG (H+L) (AS007) at 1:500 dilution. Blue: DAPI for nuclear staining.