

A17122

Leader in Biomolecular Solutions for Life Science



PRPF6 Rabbit pAb

Catalog No.: A17122

Basic Information

Observed MW

100kDa

Calculated MW

107kDa

Category

Polyclonal Antibody

Applications

WB, ELISA

Cross-Reactivity

Human

Background

The protein encoded by this gene appears to be involved in pre-mRNA splicing, possibly acting as a bridging factor between U5 and U4/U6 snRNPs in formation of the spliceosome. The encoded protein also can bind androgen receptor, providing a link between transcriptional activation and splicing.

Recommended Dilutions

WB 1:500 - 1:2000

ELISA Recommended starting concentration is 1 µg/mL. Please optimize the concentration based on your specific assay requirements.

Immunogen Information

Gene ID

24148

Swiss Prot

O94906

Immunogen

Recombinant fusion protein containing a sequence corresponding to amino acids 592-941 of human PRPF6 (NP_036601.2).

Synonyms

TOM; ANT1; Prp6; RP60; ANT-1; hPrp6; U5-102K; C20orf14; SNRNP102; PRPF6

Contact



www.abclonal.com

Product Information

Source

Rabbit

Isotype

IgG

Purification

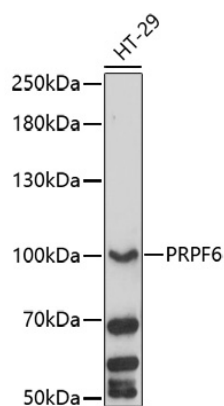
Affinity purification

Storage

Store at -20°C. Avoid freeze / thaw cycles.

Buffer: PBS with 0.01% thimerosal, 50% glycerol, pH 7.3.

Validation Data



Western blot analysis of lysates from HT-29 cells, using PRPF6 Rabbit pAb (A17122) at 1:1000 dilution.

Secondary antibody: HRP-conjugated Goat anti-Rabbit IgG (H+L) (AS014) at 1:10000 dilution.

Lysates/proteins: 25µg per lane.

Blocking buffer: 3% nonfat dry milk in TBST.

Detection: ECL Basic Kit (RM00020).

Exposure time: 90s.