

A17089

Leader in Biomolecular Solutions for Life Science



PGC1 alpha Rabbit pAb

Catalog No.: A17089

4 Publications

Basic Information

Observed MW

100kDa

Calculated MW

91kDa

Category

Polyclonal Antibody

Applications

WB, ELISA

Cross-Reactivity

Human, Mouse, Rat

Background

This gene encodes a transcriptional coactivator that induces and coordinates gene expression regulating mitochondrial biogenesis, respiration, hepatic gluconeogenesis, thermogenic program in brown fat and muscle fiber-type switching. Mice lacking the encoded protein exhibit reduced thermogenic capacity, hyperactivity and resistance to diet-induced obesity. Mice lacking the encoded protein specifically in the heart exhibit peripartum cardiomyopathy. Alternative splicing results in multiple transcript variants.

Recommended Dilutions

WB 1:500 - 1:1000

ELISA Recommended starting concentration is 1 µg/mL. Please optimize the concentration based on your specific assay requirements.

Immunogen Information

Gene ID

19017

Swiss Prot

O70343

Immunogen

Recombinant fusion protein containing a sequence corresponding to amino acids 1-300 of mouse PGC1 alpha (NP_032930.1).

Synonyms

Pgc1; PGC-1; Pgco1; Gm11133; Ppargc1; Pgc-1alpha; A830037N07Rik; PPARGC-1-alpha; PGC1 alpha

Contact



www.abclonal.com

Product Information

Source

Rabbit

Isotype

IgG

Purification

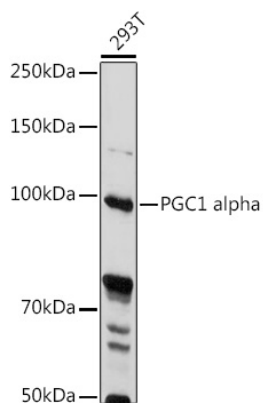
Affinity purification

Storage

Store at -20°C. Avoid freeze / thaw cycles.

Buffer: PBS with 0.02% sodium azide, 50% glycerol, pH7.3.

Validation Data



Western blot analysis of lysates from 293T cells, using PGC1 alpha Rabbit pAb (A17089) at 1:1000 dilution.

Secondary antibody: HRP-conjugated Goat anti-Rabbit IgG (H+L) (AS014) at 1:10000 dilution.

Lysates/proteins: 25µg per lane.

Blocking buffer: 3% nonfat dry milk in TBST.

Detection: ECL Basic Kit (RM00020).

Exposure time: 10s.