

A17064

Leader in Biomolecular Solutions for Life Science



## TELO2 Rabbit pAb

Catalog No.: A17064

### Basic Information

---

**Observed MW**

102kDa

**Calculated MW**

92kDa

**Category**

Polyclonal Antibody

**Applications**

WB,ELISA

**Cross-Reactivity**

Human,Mouse

### Background

---

This gene encodes a protein that functions as an S-phase checkpoint protein in the cell cycle. The protein may also play a role in DNA repair.

### Recommended Dilutions

---

**WB** 1:500 - 1:2000

### Immunogen Information

---

**Gene ID**

9894

**Swiss Prot**

Q9Y4R8

**Immunogen**

A synthetic peptide corresponding to a sequence within amino acids 450-550 of human TELO2 (NP\_057195.2).

**Synonyms**

CLK2; TEL2; YHFS; TELO2

### Contact

---



[www.abclonal.com](http://www.abclonal.com)

### Product Information

---

**Source**

Rabbit

**Isotype**

IgG

**Purification**

Affinity purification

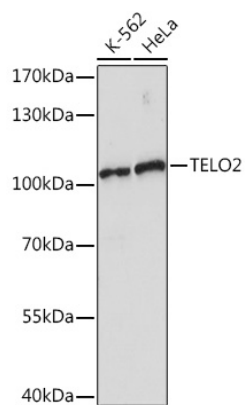
**Storage**

Store at -20°C. Avoid freeze / thaw cycles.

Buffer: PBS with 0.01% thimerosal,50% glycerol,pH7.3.

## Validation Data

---



Western blot analysis of various lysates using TELO2 Rabbit pAb (A17064) at 1:1000 dilution.  
Secondary antibody: HRP Goat Anti-Rabbit IgG (H+L) (AS014) at 1:10000 dilution.  
Lysates/proteins: 25µg per lane.  
Blocking buffer: 3% nonfat dry milk in TBST.  
Detection: ECL Enhanced Kit (RM00021).  
Exposure time: 90s.