

A17026

Leader in Biomolecular Solutions for Life Science



# CADPS Rabbit pAb

Catalog No.: A17026

## Basic Information

### Observed MW

Refer to figures

### Calculated MW

153kDa

### Category

Polyclonal Antibody

### Applications

IHC-P, ELISA

### Cross-Reactivity

Human

## Background

This gene encodes a novel neural/endocrine-specific cytosolic and peripheral membrane protein required for the Ca<sup>2+</sup>-regulated exocytosis of secretory vesicles. The protein acts at a stage in exocytosis that follows ATP-dependent priming, which involves the essential synthesis of phosphatidylinositol 4,5-bisphosphate (PtdIns(4,5)P<sub>2</sub>). Alternative splicing has been observed at this locus and three variants, encoding distinct isoforms, are described.

## Recommended Dilutions

IHC-P 1:50 - 1:200

ELISA Recommended starting concentration is 1 µg/mL. Please optimize the concentration based on your specific assay requirements.

## Immunogen Information

### Gene ID

8618

### Swiss Prot

Q9ULU8

### Immunogen

Recombinant protein (or fragment). This information is considered to be commercially sensitive.

### Synonyms

CAPS; CAPS1; CADPS1; UNC-31; CADPS

## Contact

 [www.abclonal.com](http://www.abclonal.com)

## Product Information

### Source

Rabbit

### Isotype

IgG

### Purification

Affinity purification

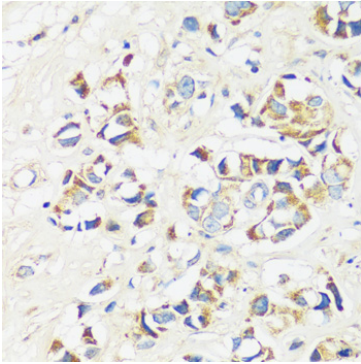
### Storage

Store at -20°C. Avoid freeze / thaw cycles.

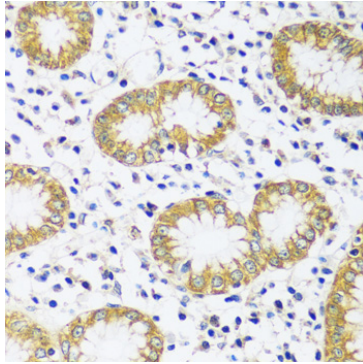
Buffer: PBS with 0.01% thimerosal, 50% glycerol, pH 7.3.

## Validation Data

---



Immunohistochemistry analysis of paraffin-embedded Human breast cancer using CADPS Rabbit pAb (A17026) at dilution of 1:100 (40x lens). Microwave antigen retrieval performed with 0.01M PBS Buffer (pH 7.2) prior to IHC staining.



Immunohistochemistry analysis of paraffin-embedded Human stomach using CADPS Rabbit pAb (A17026) at dilution of 1:100 (40x lens). Microwave antigen retrieval performed with 0.01M PBS Buffer (pH 7.2) prior to IHC staining.