

A16987

Leader in Biomolecular Solutions for Life Science



# TOP3A Rabbit pAb

Catalog No.: A16987

## Basic Information

### Observed MW

112kDa

### Calculated MW

112kDa

### Category

Polyclonal Antibody

### Applications

WB, ELISA

### Cross-Reactivity

Mouse

## Background

This gene encodes a DNA topoisomerase, an enzyme that controls and alters the topologic states of DNA during transcription. This enzyme catalyzes the transient breaking and rejoining of a single strand of DNA which allows the strands to pass through one another, thus reducing the number of supercoils and altering the topology of DNA. This enzyme forms a complex with BLM which functions in the regulation of recombination in somatic cells. Alternative splicing results in multiple transcript variants encoding different isoforms.

## Recommended Dilutions

**WB** 1:500 - 1:2000

**ELISA** Recommended starting concentration is 1 µg/mL. Please optimize the concentration based on your specific assay requirements.

## Immunogen Information

### Gene ID

7156

### Swiss Prot

Q13472

### Immunogen

A synthetic peptide corresponding to a sequence within amino acids 1-100 of human TOP3A (XP\_011522303.1).

### Synonyms

TOP3; PEOB5; ZGRF7; MGRISCE2; TOP3A

## Contact



[www.abclonal.com](http://www.abclonal.com)

## Product Information

### Source

Rabbit

### Isotype

IgG

### Purification

Affinity purification

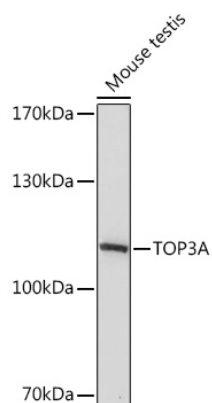
### Storage

Store at -20°C. Avoid freeze / thaw cycles.

Buffer: PBS with 0.01% thimerosal, 50% glycerol, pH 7.3.

## Validation Data

---



Western blot analysis of lysates from Mouse testis, using TOP3A Rabbit pAb (A16987) at 1:1000 dilution.

Secondary antibody: HRP-conjugated Goat anti-Rabbit IgG (H+L) (AS014) at 1:10000 dilution.

Lysates/proteins: 25µg per lane.

Blocking buffer: 3% nonfat dry milk in TBST.

Detection: ECL Basic Kit (RM00020).

Exposure time: 10s.