

A16797

Leader in Biomolecular Solutions for Life Science



CASQ2 Rabbit pAb

Catalog No.: A16797

Basic Information

Observed MW

46kDa

Calculated MW

46kDa

Category

Polyclonal Antibody

Applications

WB,IHC-P,ELISA

Cross-Reactivity

Mouse,Rat

Background

The protein encoded by this gene specifies the cardiac muscle family member of the calsequestrin family. Calsequestrin is localized to the sarcoplasmic reticulum in cardiac and slow skeletal muscle cells. The protein is a calcium binding protein that stores calcium for muscle function. Mutations in this gene cause stress-induced polymorphic ventricular tachycardia, also referred to as catecholaminergic polymorphic ventricular tachycardia 2 (CPVT2), a disease characterized by bidirectional ventricular tachycardia that may lead to cardiac arrest.

Recommended Dilutions

WB 1:500 - 1:2000

IHC-P 1:50 - 1:100

ELISA Recommended starting concentration is 1 µg/mL. Please optimize the concentration based on your specific assay requirements.

Immunogen Information

Gene ID

845

Swiss Prot

O14958

Immunogen

Recombinant protein (or fragment). This information is considered to be commercially sensitive.

Synonyms

PDIB2; CASQ2

Contact



www.abclonal.com

Product Information

Source

Rabbit

Isotype

IgG

Purification

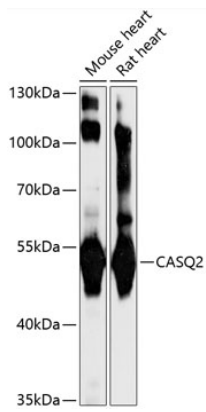
Affinity purification

Storage

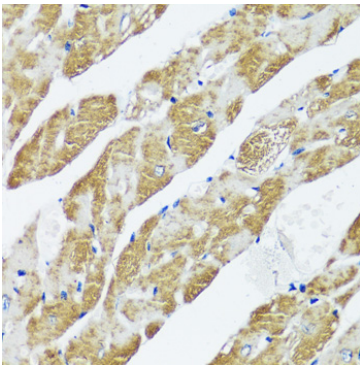
Store at -20°C. Avoid freeze / thaw cycles.

Buffer: PBS with 0.01% thimerosal, 50% glycerol, pH7.3.

Validation Data



Western blot analysis of various lysates using CASQ2 Rabbit pAb (A16797) at 1:1000 dilution.
Secondary antibody: HRP-conjugated Goat anti-Rabbit IgG (H+L) (AS014) at 1:10000 dilution.
Lysates/proteins: 25µg per lane.
Blocking buffer: 3% nonfat dry milk in TBST.
Detection: ECL Basic Kit (RM00020).
Exposure time: 1s.



Immunohistochemistry analysis of paraffin-embedded Mouse heart using CASQ2 Rabbit pAb (A16797) at dilution of 1:100 (40x lens).
Microwave antigen retrieval performed with 0.01M PBS Buffer (pH 7.2) prior to IHC staining.