

A16725

Leader in Biomolecular Solutions for Life Science



IQSEC1 Rabbit pAb

Catalog No.: A16725

Basic Information

Observed MW

108kDa

Calculated MW

108kDa

Category

Polyclonal Antibody

Applications

WB,ELISA

Cross-Reactivity

Mouse,Rat

Background

Predicted to enable protein kinase binding activity. Predicted to be involved in several processes, including positive regulation of focal adhesion disassembly; positive regulation of keratinocyte migration; and regulation of postsynaptic neurotransmitter receptor internalization. Located in nucleolus. Implicated in intellectual developmental disorder with short stature and behavioral abnormalities.

Recommended Dilutions

WB 1:500 - 1:1000

ELISA Recommended starting concentration is 1 µg/mL. Please optimize the concentration based on your specific assay requirements.

Immunogen Information

Gene ID

9922

Swiss Prot

Q6DN90

Immunogen

Recombinant protein (or fragment). This information is considered to be commercially sensitive.

Synonyms

BRAG2; GEP100; IDDSSBA; ARFGEP100; ARF-GEP100; IQSEC1

Contact

 www.abclonal.com

Product Information

Source

Rabbit

Isotype

IgG

Purification

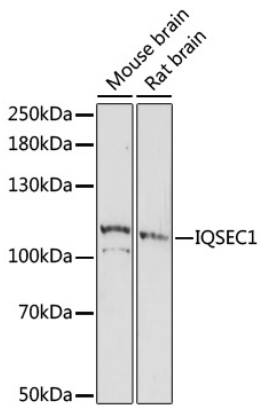
Affinity purification

Storage

Store at -20°C. Avoid freeze / thaw cycles.

Buffer: PBS with 0.01% thimerosal, 50% glycerol, pH7.3.

Validation Data



Western blot analysis of various lysates using IQSEC1 Rabbit pAb (A16725) at 1:1000 dilution.

Secondary antibody: HRP-conjugated Goat anti-Rabbit IgG (H+L) (AS014) at 1:10000 dilution.

Lysates/proteins: 25µg per lane.

Blocking buffer: 3% nonfat dry milk in TBST.

Detection: ECL Enhanced Kit (RM00021).

Exposure time: 5min.