

A16670

Leader in Biomolecular Solutions for Life Science



CORO2B Rabbit pAb

Catalog No.: A16670

1 Publications

Basic Information

Observed MW

Calculated MW

55kDa

Category

Polyclonal Antibody

Applications

WB,ELISA

Cross-Reactivity

Human,Mouse,Rat

Background

Enables talin binding activity and vinculin binding activity. Acts upstream of or within several processes, including negative regulation of cell-substrate adhesion; regulation of actin cytoskeleton organization; and regulation of establishment of protein localization. Located in focal adhesion.

Recommended Dilutions

WB 1:500 - 1:2000

ELISA Recommended starting concentration is 1 µg/mL. Please optimize the concentration based on your specific assay requirements.

Immunogen Information

Gene ID

10391

Swiss Prot

Q9UQ03

Immunogen

Recombinant fusion protein containing a sequence corresponding to amino acids 361-480 of human CORO2B (NP_006082.3).

Synonyms

CLIPINC; CORO2B

Contact

 www.abclonal.com

Product Information

Source

Rabbit

Isotype

IgG

Purification

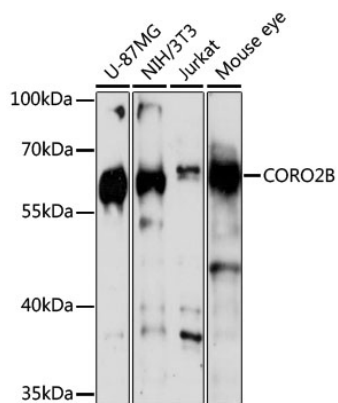
Affinity purification

Storage

Store at -20°C. Avoid freeze / thaw cycles.

Buffer: PBS with 0.01% thimerosal, 50% glycerol, pH7.3.

Validation Data



Western blot analysis of various lysates using CORO2B Rabbit pAb (A16670) at 1:3000 dilution.
Secondary antibody: HRP-conjugated Goat anti-Rabbit IgG (H+L) (AS014) at 1:10000 dilution.
Lysates/proteins: 25µg per lane.
Blocking buffer: 3% nonfat dry milk in TBST.
Detection: ECL Basic Kit (RM00020).
Exposure time: 60s.