

A16655

Leader in Biomolecular Solutions for Life Science



CREB3L3 Rabbit pAb

Catalog No.: A16655

1 Publications

Basic Information

Observed MW

70kDa

Calculated MW

49kDa

Category

Polyclonal Antibody

Applications

WB, ELISA

Cross-Reactivity

Human, Rat

Background

This gene encodes a member of the basic-leucine zipper family and the AMP-dependent transcription factor family. The encoded protein is localized to the endoplasmic reticulum and acts as a transcription factor activated by cyclic AMP stimulation. The encoded protein binds the cyclic AMP response element (CRE) and the box-B element and has been linked to acute inflammatory response, hepatocellular carcinoma, triglyceride metabolism, and hepcidin expression. Alternative splicing results in multiple transcript variants.

Recommended Dilutions

WB 1:500 - 1:1000

ELISA Recommended starting concentration is 1 µg/mL. Please optimize the concentration based on your specific assay requirements.

Immunogen Information

Gene ID

84699

Swiss Prot

Q68CJ9

Immunogen

Recombinant fusion protein containing a sequence corresponding to amino acids 371-460 of human CREB3L3 (NP_001258924.1).

Synonyms

CREBH; HYTG2; CREB-H; HYST1481; CREB3L3

Contact



www.abclonal.com

Product Information

Source

Rabbit

Isotype

IgG

Purification

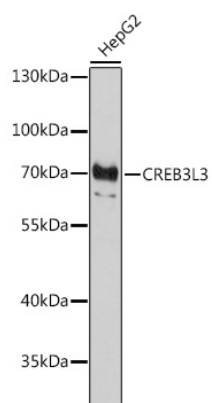
Affinity purification

Storage

Store at -20°C. Avoid freeze / thaw cycles.

Buffer: PBS with 0.01% thimerosal, 50% glycerol, pH 7.3.

Validation Data



Western blot analysis of lysates from HepG2 cells, using CREB3L3 Rabbit pAb (A16655) at 1:1000 dilution.

Secondary antibody: HRP-conjugated Goat anti-Rabbit IgG (H+L) (AS014) at 1:10000 dilution.

Lysates/proteins: 25µg per lane.

Blocking buffer: 3% nonfat dry milk in TBST.

Detection: ECL Basic Kit (RM00020).

Exposure time: 90s.