

A16653

Leader in Biomolecular Solutions for Life Science



## TMEM100 Rabbit pAb

Catalog No.: A16653

1 Publications

### Basic Information

#### Observed MW

14kDa

#### Calculated MW

14kDa

#### Category

Polyclonal Antibody

#### Applications

WB, ELISA

#### Cross-Reactivity

Human, Mouse

### Background

Involved in BMP signaling pathway. Located in several cellular components, including endoplasmic reticulum; perikaryon; and perinuclear region of cytoplasm.

### Recommended Dilutions

WB 1:500 - 1:2000

### Immunogen Information

#### Gene ID

55273

#### Swiss Prot

Q9NV29

#### Immunogen

A synthetic peptide corresponding to a sequence within amino acids 50 to the C-terminus of human TMEM100 (NP\_001093110.1).

#### Synonyms

TMEM100

### Contact



[www.abclonal.com](http://www.abclonal.com)

### Product Information

#### Source

Rabbit

#### Isotype

IgG

#### Purification

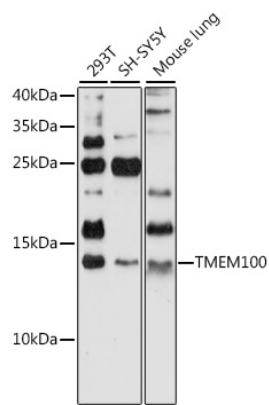
Affinity purification

#### Storage

Store at -20°C. Avoid freeze / thaw cycles.

Buffer: PBS with 0.01% thimerosal, 50% glycerol, pH 7.3.

# Validation Data



Western blot analysis of various lysates using TMEM100 Rabbit pAb (A16653) at 1:1000 dilution.  
Secondary antibody: HRP Goat Anti-Rabbit IgG (H+L) (AS014) at 1:10000 dilution.  
Lysates/proteins: 25µg per lane.  
Blocking buffer: 3% nonfat dry milk in TBST.  
Detection: ECL Basic Kit (RM00020).  
Exposure time: 90s.