

A16644

Leader in Biomolecular Solutions for Life Science



ZDHHC14 Rabbit pAb

Catalog No.: A16644

Basic Information

Observed MW

53kDa

Calculated MW

54kDa

Category

Polyclonal Antibody

Applications

WB,ELISA

Cross-Reactivity

Human

Background

Predicted to enable protein-cysteine S-palmitoyltransferase activity. Predicted to be involved in peptidyl-L-cysteine S-palmitoylation and protein targeting to membrane. Predicted to be located in membrane. Predicted to be integral component of membrane. Predicted to be active in Golgi apparatus and endoplasmic reticulum. Is expressed in oocyte. Orthologous to human ZDHHC14 (zinc finger DHHC-type palmitoyltransferase 14).

Recommended Dilutions

WB 1:500 - 1:2000

ELISA Recommended starting concentration is 1 µg/mL. Please optimize the concentration based on your specific assay requirements.

Immunogen Information

Gene ID

224454

Swiss Prot

Q8BQQ1

Immunogen

A synthetic peptide corresponding to a sequence within amino acids 1-100 of mouse ZDHHC14 (NP_666185.3).

Synonyms

New1cp; B530001K09Rik; ZDHHC14

Contact

 www.abclonal.com

Product Information

Source

Rabbit

Isotype

IgG

Purification

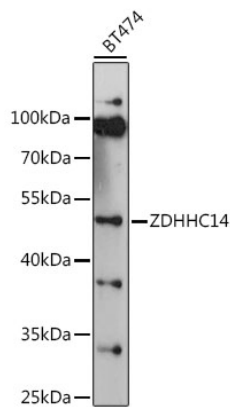
Affinity purification

Storage

Store at -20°C. Avoid freeze / thaw cycles.

Buffer: PBS with 0.01% thimerosal, 50% glycerol, pH7.3.

Validation Data



Western blot analysis of lysates from BT474 cells, using ZDHHC14 Rabbit pAb (A16644) at 1:1000 dilution.

Secondary antibody: HRP-conjugated Goat anti-Rabbit IgG (H+L) (AS014) at 1:10000 dilution.

Lysates/proteins: 25µg per lane.

Blocking buffer: 3% nonfat dry milk in TBST.

Detection: ECL Basic Kit (RM00020).

Exposure time: 90s.