

A16636

Leader in Biomolecular Solutions for Life Science



ECE2 Rabbit pAb

Catalog No.: A16636

Basic Information

Observed MW

120kDa

Calculated MW

28kDa/83kDa/86kDa/91kDa/99kDa

Category

Polyclonal Antibody

Applications

WB

Cross-Reactivity

Human

Background

Enables metalloendopeptidase activity. Involved in peptide hormone processing. Located in cytoplasmic vesicle membrane.

Recommended Dilutions

WB 1:500 - 1:1000

Immunogen Information

Gene ID

9718

Swiss Prot

O60344

Immunogen

Synthetic peptide. This information is considered to be commercially sensitive.

Synonyms

EEF1AKMT4; ECE2

Contact



www.abclonal.com

Product Information

Source

Rabbit

Isotype

IgG

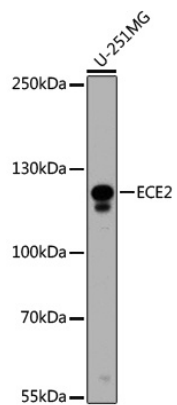
Purification

Affinity purification

Storage

Store at 4°C (regular) or -20°C (long term). Avoid freeze / thaw cycles.
Buffer: PBS with 0.02% sodium azide, pH7.3.

Validation Data



Western blot analysis of lysates from U-251MG cells, using ECE2 Rabbit pAb (A16636) at dilution.

Secondary antibody: HRP-conjugated Goat anti-Rabbit IgG (H+L) (AS014) at 1:10000 dilution.

Lysates/proteins: 25µg per lane.

Blocking buffer: 3% nonfat dry milk in TBST.