

A16624

Leader in Biomolecular Solutions for Life Science



# CARD16 Rabbit pAb

Catalog No.: A16624

## Basic Information

---

### Observed MW

28kDa

### Calculated MW

23kDa

### Category

Polyclonal Antibody

### Applications

WB,ELISA

### Cross-Reactivity

Mouse

## Background

---

Enables several functions, including CARD domain binding activity; cysteine-type endopeptidase inhibitor activity; and enzyme binding activity. Involved in several processes, including negative regulation of cysteine-type endopeptidase activity; regulation of gene expression; and regulation of signal transduction. Part of protease inhibitor complex.

## Recommended Dilutions

---

**WB** 1:500 - 1:2000

**ELISA** Recommended starting concentration is 1 µg/mL. Please optimize the concentration based on your specific assay requirements.

## Immunogen Information

---

### Gene ID

114769

### Swiss Prot

Q5EG05

### Immunogen

Synthetic peptide. This information is considered to be commercially sensitive.

### Synonyms

COP; COP1; PSEUDO-ICE; LLID-114769; CARD16

## Contact

---

 [www.abclonal.com](http://www.abclonal.com)

## Product Information

---

### Source

Rabbit

### Isotype

IgG

### Purification

Affinity purification

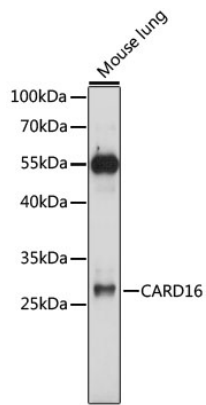
### Storage

Store at -20°C. Avoid freeze / thaw cycles.

Buffer: PBS with 0.01% thimerosal, 50% glycerol, pH7.3.

## Validation Data

---



Western blot analysis of lysates from mouse lung, using CARD16 Rabbit pAb (A16624) at 1:1000 dilution.

Secondary antibody: HRP-conjugated Goat anti-Rabbit IgG (H+L) (AS014) at 1:10000 dilution.

Lysates/proteins: 25 $\mu$ g per lane.

Blocking buffer: 3% nonfat dry milk in TBST.

Detection: ECL Basic Kit (RM00020).

Exposure time: 90s.