

A16616

Leader in Biomolecular Solutions for Life Science



# ATP11C Rabbit pAb

Catalog No.: A16616

## Basic Information

### Observed MW

157kDa

### Calculated MW

129kDa

### Category

Polyclonal Antibody

### Applications

WB,ELISA

### Cross-Reactivity

Human,Mouse

## Background

Enables phosphatidylethanolamine flippase activity and phosphatidylserine flippase activity. Predicted to be involved in phospholipid translocation; positive regulation of B cell differentiation; and pre-B cell differentiation. Located in endoplasmic reticulum and plasma membrane. Is integral component of plasma membrane. Implicated in X-linked congenital hemolytic anemia.

## Recommended Dilutions

**WB** 1:500 - 1:2000

**ELISA** Recommended starting concentration is 1 µg/mL. Please optimize the concentration based on your specific assay requirements.

## Immunogen Information

### Gene ID

286410

### Swiss Prot

Q8NB49

### Immunogen

Recombinant protein (or fragment). This information is considered to be commercially sensitive.

### Synonyms

ATPIG; ATPIQ; HACXL; ATP11C

## Contact



[www.abclonal.com](http://www.abclonal.com)

## Product Information

### Source

Rabbit

### Isotype

IgG

### Purification

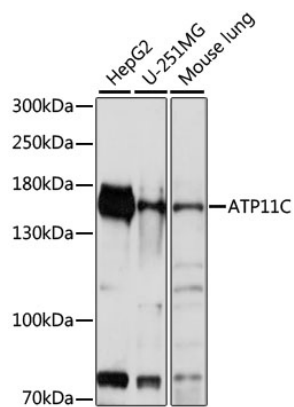
Affinity purification

### Storage

Store at -20°C. Avoid freeze / thaw cycles.

Buffer: PBS with 0.01% thimerosal, 50% glycerol, pH7.3.

## Validation Data



Western blot analysis of various lysates using ATP11C Rabbit pAb (A16616) at 1:1000 dilution.

Secondary antibody: HRP-conjugated Goat anti-Rabbit IgG (H+L) (AS014) at 1:10000 dilution.

Lysates/proteins: 25µg per lane.

Blocking buffer: 3% nonfat dry milk in TBST.

Detection: ECL Basic Kit (RM00020).

Exposure time: 5s.