

A16601

Leader in Biomolecular Solutions for Life Science



## SPC24 Rabbit pAb

Catalog No.: A16601

2 Publications

### Basic Information

#### Observed MW

26kDa

#### Calculated MW

22kDa

#### Category

Polyclonal Antibody

#### Applications

WB,ELISA

#### Cross-Reactivity

Human,Mouse

### Background

Predicted to be involved in cell division. Located in nucleolus and nucleoplasm. Part of Ndc80 complex.

### Recommended Dilutions

**WB** 1:1000 - 1:5000

**ELISA** Recommended starting concentration is 1 µg/mL. Please optimize the concentration based on your specific assay requirements.

### Immunogen Information

#### Gene ID

147841

#### Swiss Prot

Q8NBT2

#### Immunogen

Recombinant fusion protein containing a sequence corresponding to amino acids 1-197 of human SPC24 (NP\_872319.1).

#### Synonyms

SPBC24; SPC24

### Contact



[www.abclonal.com](http://www.abclonal.com)

### Product Information

#### Source

Rabbit

#### Isotype

IgG

#### Purification

Affinity purification

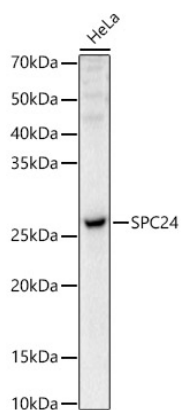
#### Storage

Store at -20°C. Avoid freeze / thaw cycles.

Buffer: PBS with 0.05% proclin300,50% glycerol,pH7.3.

## Validation Data

---



Western blot analysis of lysates from HeLa cells, using SPC24 Rabbit pAb (A16601) at 1:2000 dilution.

Secondary antibody: HRP-conjugated Goat anti-Rabbit IgG (H+L) (AS014) at 1:10000 dilution.

Lysates/proteins: 25µg per lane.

Blocking buffer: 3% nonfat dry milk in TBST.

Detection: ECL Basic Kit (RM00020).

Exposure time: 5s.