

A16600

Leader in Biomolecular Solutions for Life Science



NOTUM Rabbit pAb

Catalog No.: A16600

Basic Information

Observed MW

56kDa

Calculated MW

56kDa

Category

Polyclonal Antibody

Applications

WB,ELISA

Cross-Reactivity

Human

Background

Enables palmitoleyl hydrolase activity. Involved in negative regulation of Wnt signaling pathway and protein depalmitoylation. Acts upstream of or within bone development and regulation of bone mineralization. Predicted to be located in endoplasmic reticulum lumen and extracellular region.

Recommended Dilutions

WB 1:500 - 1:2000

ELISA Recommended starting concentration is 1 µg/mL. Please optimize the concentration based on your specific assay requirements.

Immunogen Information

Gene ID

147111

Swiss Prot

Q6P988

Immunogen

Recombinant protein (or fragment). This information is considered to be commercially sensitive.

Synonyms

hNOTUM; NOTUM

Contact



www.abclonal.com

Product Information

Source

Rabbit

Isotype

IgG

Purification

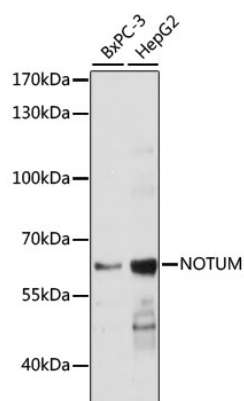
Affinity purification

Storage

Store at -20°C. Avoid freeze / thaw cycles.

Buffer: PBS with 0.01% thimerosal, 50% glycerol, pH7.3.

Validation Data



Western blot analysis of various lysates using NOTUM Rabbit pAb (A16600) at 1:1000 dilution.

Secondary antibody: HRP-conjugated Goat anti-Rabbit IgG (H+L) (AS014) at 1:10000 dilution.

Lysates/proteins: 25µg per lane.

Blocking buffer: 3% nonfat dry milk in TBST.

Detection: ECL Basic Kit (RM00020).

Exposure time: 1s.