

A16580

Leader in Biomolecular Solutions for Life Science



FAM234A Rabbit pAb

Catalog No.: A16580

Basic Information

Observed MW

67kDa

Calculated MW

60kDa

Category

Polyclonal Antibody

Applications

WB,ELISA

Cross-Reactivity

Human

Background

Located in cell surface.

Recommended Dilutions

WB 1:500 - 1:2000

ELISA Recommended starting concentration is 1 µg/mL. Please optimize the concentration based on your specific assay requirements.

Immunogen Information

Gene ID

83986

Swiss Prot

Q9H0X4

Immunogen

Recombinant protein (or fragment). This information is considered to be commercially sensitive.

Synonyms

gs19; ITFG3; C16orf9; FAM234A

Contact



www.abclonal.com

Product Information

Source

Rabbit

Isotype

IgG

Purification

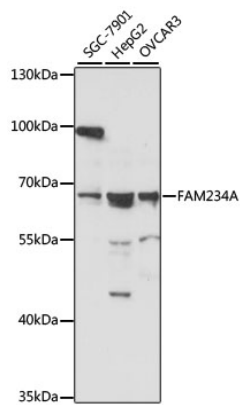
Affinity purification

Storage

Store at -20°C. Avoid freeze / thaw cycles.

Buffer: PBS with 0.01% thimerosal, 50% glycerol, pH7.3.

Validation Data



Western blot analysis of various lysates using FAM234A Rabbit pAb (A16580) at 1:1000 dilution.

Secondary antibody: HRP-conjugated Goat anti-Rabbit IgG (H+L) (AS014) at 1:10000 dilution.

Lysates/proteins: 25µg per lane.

Blocking buffer: 3% nonfat dry milk in TBST.

Detection: ECL Basic Kit (RM00020).

Exposure time: 3s.