

A16544

Leader in Biomolecular Solutions for Life Science



LIN7C Rabbit pAb

Catalog No.: A16544

Basic Information

Observed MW

25kDa

Calculated MW

22kDa

Category

Polyclonal Antibody

Applications

WB,ELISA

Cross-Reactivity

Human,Mouse,Rat

Background

Enables L27 domain binding activity and cytoskeletal protein binding activity. Involved in morphogenesis of an epithelial sheet. Located in cell-cell junction; cytoplasm; and plasma membrane. Part of MPP7-DLG1-LIN7 complex.

Recommended Dilutions

WB 1:500 - 1:2000

Immunogen Information

Gene ID

55327

Swiss Prot

Q9NUP9

Immunogen

Recombinant fusion protein containing a sequence corresponding to amino acids 1-70 of human LIN7C (NP_060832.1).

Synonyms

MALS3; VELI3; LIN-7C; MALS-3; LIN-7-C; LIN7C

Contact



www.abclonal.com

Product Information

Source

Rabbit

Isotype

IgG

Purification

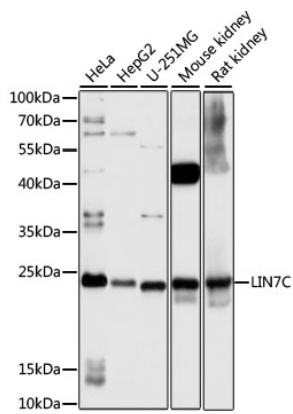
Affinity purification

Storage

Store at -20°C. Avoid freeze / thaw cycles.

Buffer: PBS with 0.01% thimerosal,50% glycerol,pH7.3.

Validation Data



Western blot analysis of various lysates using LIN7C Rabbit pAb (A16544) at 1:1000 dilution.
Secondary antibody: HRP Goat Anti-Rabbit IgG (H+L) (AS014) at 1:10000 dilution.
Lysates/proteins: 25 μ g per lane.
Blocking buffer: 3% nonfat dry milk in TBST.
Detection: ECL Basic Kit (RM00020).
Exposure time: 3s.