

A16505

Leader in Biomolecular Solutions for Life Science



RAB38 Rabbit pAb

Catalog No.: A16505

Basic Information

Observed MW

25kDa

Calculated MW

24kDa

Category

Polyclonal Antibody

Applications

WB,ELISA

Cross-Reactivity

Human,Mouse,Rat

Background

Enables several functions, including AP-1 adaptor complex binding activity; AP-3 adaptor complex binding activity; and BLOC-2 complex binding activity. Involved in several processes, including endosome to melanosome transport; melanosome assembly; and phagosome acidification. Located in several cellular components, including cytoplasmic vesicle; lysosome; and mitochondria-associated endoplasmic reticulum membrane.

Recommended Dilutions

WB 1:500 - 1:2000

ELISA Recommended starting concentration is 1 µg/mL. Please optimize the concentration based on your specific assay requirements.

Immunogen Information

Gene ID

23682

Swiss Prot

P57729

Immunogen

Recombinant protein (or fragment). This information is considered to be commercially sensitive.

Synonyms

rrGTPbp; NY-MEL-1; RAB38

Contact

 www.abclonal.com

Product Information

Source

Rabbit

Isotype

IgG

Purification

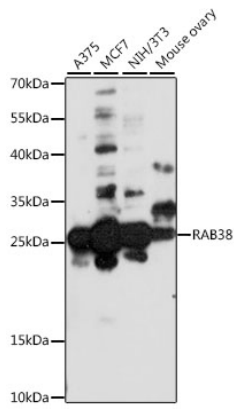
Affinity purification

Storage

Store at -20°C. Avoid freeze / thaw cycles.

Buffer: PBS with 0.01% thimerosal, 50% glycerol, pH7.3.

Validation Data



Western blot analysis of various lysates using RAB38 Rabbit pAb (A16505) at 1:1000 dilution.

Secondary antibody: HRP-conjugated Goat anti-Rabbit IgG (H+L) (AS014) at 1:10000 dilution.

Lysates/proteins: 25µg per lane.

Blocking buffer: 3% nonfat dry milk in TBST.

Detection: ECL Basic Kit (RM00020).

Exposure time: 90s.