

A16492

Leader in Biomolecular Solutions for Life Science



# SOX21 Rabbit pAb

Catalog No.: A16492

## Basic Information

### Observed MW

28kDa

### Calculated MW

29kDa

### Category

Polyclonal Antibody

### Applications

WB, ELISA

### Cross-Reactivity

Mouse

## Background

SRY-related HMG-box (SOX) genes encode a family of DNA-binding proteins containing a 79-amino acid HMG (high mobility group) domain that shares at least 50% sequence identity with the DNA-binding HMG box of the SRY protein (MIM 480000). SOX proteins are divided into 6 subgroups based on sequence similarity within and outside of the HMG domain. For additional background information on SOX genes, see SOX1 (MIM 602148).

## Recommended Dilutions

**WB** 1:500 - 1:1000

**ELISA** Recommended starting concentration is 1 µg/mL. Please optimize the concentration based on your specific assay requirements.

## Immunogen Information

### Gene ID

11166

### Swiss Prot

Q9Y651

### Immunogen

Recombinant fusion protein containing a sequence corresponding to amino acids 167-276 of human SOX21 (NP\_009015.1).

### Synonyms

SOX25; SOX21

## Contact

 [www.abclonal.com](http://www.abclonal.com)

## Product Information

### Source

Rabbit

### Isotype

IgG

### Purification

Affinity purification

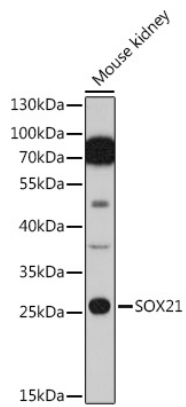
### Storage

Store at -20°C. Avoid freeze / thaw cycles.

Buffer: PBS with 0.01% thimerosal, 50% glycerol, pH 7.3.

## Validation Data

---



Western blot analysis of lysates from Mouse kidney , using SOX21 Rabbit pAb (A16492) at 1:1000 dilution.

Secondary antibody: HRP-conjugated Goat anti-Rabbit IgG (H+L) (AS014) at 1:10000 dilution.

Lysates/proteins: 25µg per lane.

Blocking buffer: 3% nonfat dry milk in TBST.

Detection: ECL Basic Kit (RM00020).

Exposure time: 60s.