

A16448

Leader in Biomolecular Solutions for Life Science



## ELL Rabbit pAb

Catalog No.: A16448

### Basic Information

#### Observed MW

72kDa

#### Calculated MW

68kDa

#### Category

Polyclonal Antibody

#### Applications

WB, ELISA

#### Cross-Reactivity

Mouse

### Background

Enables phosphatase binding activity. Involved in positive regulation of transcription, DNA-templated and snRNA transcription. Located in cytosol; nuclear body; and transcriptionally active chromatin. Part of transcription elongation factor complex.

### Recommended Dilutions

WB 1:500 - 1:2000

### Immunogen Information

#### Gene ID

8178

#### Swiss Prot

P55199

#### Immunogen

A synthetic peptide corresponding to a sequence within amino acids 350-450 of human ELL (NP\_006523.1).

#### Synonyms

MEN; ELL1; PPP1R68; C19orf17; ELL

### Contact



[www.abclonal.com](http://www.abclonal.com)

### Product Information

#### Source

Rabbit

#### Isotype

IgG

#### Purification

Affinity purification

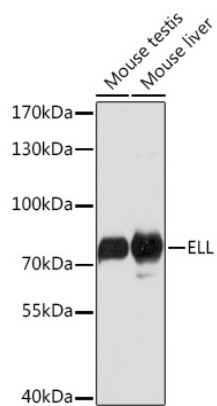
#### Storage

Store at -20°C. Avoid freeze / thaw cycles.

Buffer: PBS with 0.01% thimerosal, 50% glycerol, pH 7.3.

## Validation Data

---



Western blot analysis of various lysates using ELL Rabbit pAb (A16448) at 1:1000 dilution.

Secondary antibody: HRP Goat Anti-Rabbit IgG (H+L) (AS014) at 1:10000 dilution.

Lysates/proteins: 25µg per lane.

Blocking buffer: 3% nonfat dry milk in TBST.

Detection: ECL Basic Kit (RM00020).

Exposure time: 3s.