

A16438

Leader in Biomolecular Solutions for Life Science



THBS4 Rabbit pAb

Catalog No.: A16438 **1 Publications**

Basic Information

Observed MW

106kDa

Calculated MW

106kDa

Category

Polyclonal Antibody

Applications

WB,ELISA

Cross-Reactivity

Human,Mouse

Background

The protein encoded by this gene belongs to the thrombospondin protein family. Thrombospondin family members are adhesive glycoproteins that mediate cell-to-cell and cell-to-matrix interactions. This protein forms a pentamer and can bind to heparin and calcium. It is involved in local signaling in the developing and adult nervous system, and it contributes to spinal sensitization and neuropathic pain states. This gene is activated during the stromal response to invasive breast cancer. It may also play a role in inflammatory responses in Alzheimer's disease. Alternative splicing results in multiple transcript variants.

Recommended Dilutions

WB 1:500 - 1:2000

ELISA Recommended starting concentration is 1 µg/mL. Please optimize the concentration based on your specific assay requirements.

Immunogen Information

Gene ID

7060

Swiss Prot

P35443

Immunogen

Recombinant protein (or fragment). This information is considered to be commercially sensitive.

Synonyms

TSP4; TSP-4; THBS4

Contact

 www.abclonal.com

Product Information

Source

Rabbit

Isotype

IgG

Purification

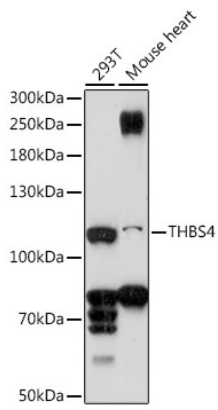
Affinity purification

Storage

Store at -20°C. Avoid freeze / thaw cycles.

Buffer: PBS with 0.01% thimerosal, 50% glycerol, pH7.3.

Validation Data



Western blot analysis of various lysates using THBS4 Rabbit pAb (A16438) at 1:1000 dilution.

Secondary antibody: HRP-conjugated Goat anti-Rabbit IgG (H+L) (AS014) at 1:10000 dilution.

Lysates/proteins: 25µg per lane.

Blocking buffer: 3% nonfat dry milk in TBST.

Detection: ECL Enhanced Kit (RM00021).

Exposure time: 150s.